

I κ B- α (Phospho-Ser32/Ser36) Antibody

Catalog No: #11152

Package Size: #11152-1 50ul #11152-2 100ul

Orders: order@signalwayantibody.com

Support: tech@signalwayantibody.com

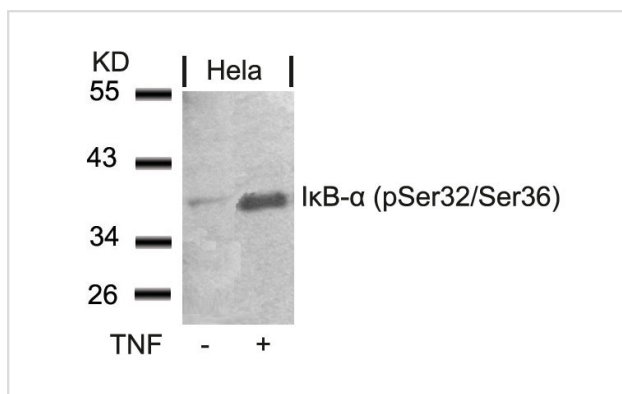
Description

Product Name	I κ B- α (Phospho-Ser32/Ser36) Antibody
Host Species	Rabbit
Clonality	Polyclonal
Purification	Antibodies were produced by immunizing rabbits with synthetic phosphopeptide and KLH conjugates. Antibodies were purified by affinity-chromatography using epitope-specific phosphopeptide. Non-phospho specific antibodies were removed by chromatography using non-phosphopeptide.
Applications	WB IHC IF
Species Reactivity	Hu Ms
Specificity	The antibody detects endogenous level of I κ B- α only when phosphorylated at serine 32/36.
Immunogen Type	Peptide-KLH
Immunogen Description	Peptide sequence around phosphorylation site of serine 32/36 (H-D-S(p)-G-L-D-S(p)-M-K) derived from Human I κ B- α .
Target Name	I κ B- α
Modification	Phospho
Other Names	I-kappa-B-alpha; IKBA; NF-kappaB inhibitor alpha; NFKBI; NFKBIA
Accession No.	Swiss-Prot: P25963NCBI Protein: NP_065390.1
Uniprot	P25963
GeneID	4792;
Concentration	1.0mg/ml
Formulation	Liquid in 0.42% Potassium phosphate, 0.87% Sodium chloride, pH 7.3, 30% glycerol, and 0.01% sodium azide.
Storage	Store at -20°C for long term preservation (recommended). Store at 4°C for short term use.

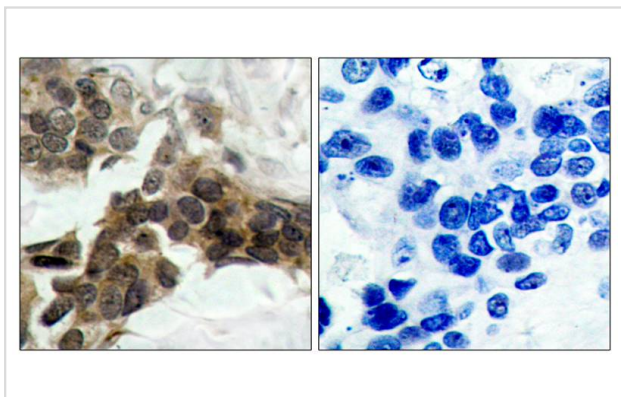
Application Details

WB 1 μ O 500 - 1 μ O 1000, IHC 1 μ O 100 - 1 μ O 200, IF 1 μ O 100 - 1 μ O 500

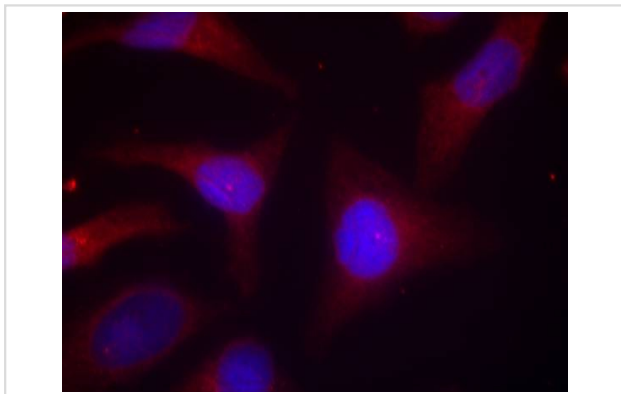
Images



Western blot analysis of extracts from HeLa cells untreated or treated with TNF using I κ B- α (Phospho-Ser32/Ser36) Antibody #11152.



Immunohistochemical analysis of paraffin-embedded human breast carcinoma tissue using I κ B-a(Phospho-Ser32/Ser36) Antibody #11152(left) or the same antibody preincubated with blocking peptide(right).



Immunofluorescence staining of methanol-fixed HeLa cells using I κ B-a(Phospho-Ser32/Ser36) Antibody #11152.

Note: This product is for in vitro research use only