

UGGT1 Antibody

Catalog No: #43834

Orders: order@signalwayantibody.com

Support: tech@signalwayantibody.com

Description

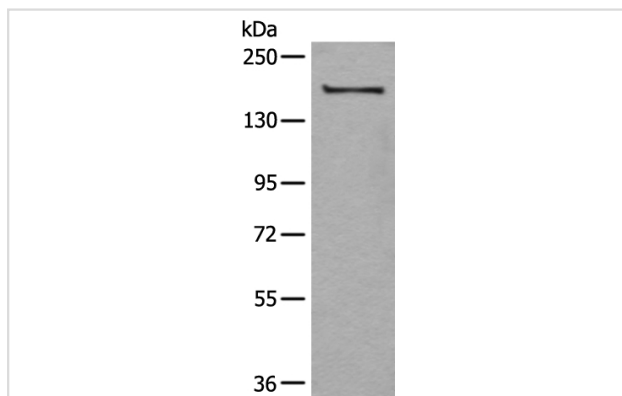
Product Name	UGGT1 Antibody
Host Species	Rabbit
Clonality	Polyclonal
Purification	Antigen affinity purification
Applications	IHC WB
Species Reactivity	Hu
Specificity	The antibody detects endogenous levels of total UGGT1 protein.
Immunogen Type	peptide
Immunogen Description	Synthetic peptide of human UGGT1
Target Name	UGGT1
Other Names	UGT1; HUGT1; UGCGL1
Accession No.	Swiss-Prot#: Q9NYU2NCBI Gene ID: 56886
Uniprot	Q9NYU2
GeneID	56886;
Calculated MW	177kd
Concentration	0.6mg/ml
Formulation	Rabbit IgG in pH7.4 PBS, 0.05% NaN ₃ , 40% Glycerol.
Storage	Store at -20°C

Application Details

Western blotting: 1:200-1000

Immunohistochemistry: 1: 20-100

Images



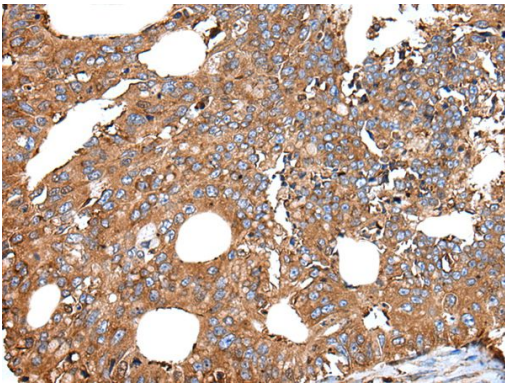
Gel: 6%SDS-PAGE

Lysate: 40 µg, Lane: A172 cell lysate,

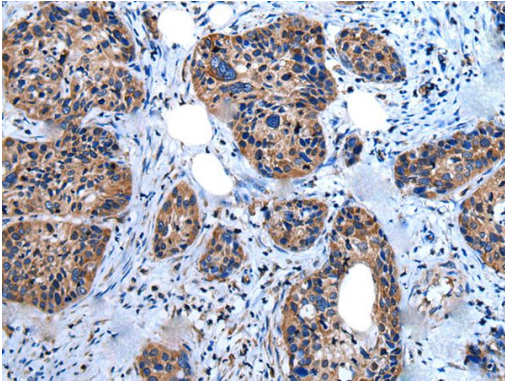
Primary antibody:UGGT1 antibody at dilution 1/250,

Secondary antibody: Goat anti rabbit IgG at 1/8000 dilution,

Exposure time: 20 seconds



The image on the left is immunohistochemistry of paraffin-embedded Human colorectal cancer tissue using UGGT1 Antibody at dilution 1/25, on the right is treated with synthetic peptide. (Original magnification: x200)



The image on the left is immunohistochemistry of paraffin-embedded Human cervical cancer tissue using UGGT1 Antibody at dilution 1/25, on the right is treated with synthetic peptide. (Original magnification: x200)

Background

UDP-glucose:glycoprotein glucosyltransferase (UGT) is a soluble protein of the endoplasmic reticulum (ER) that selectively reglycosylates unfolded glycoproteins, thus providing quality control for protein transport out of the ER.

Note: This product is for in vitro research use only