

SPTB Antibody

Catalog No: #43844

Orders: order@signalwayantibody.comSupport: tech@signalwayantibody.com

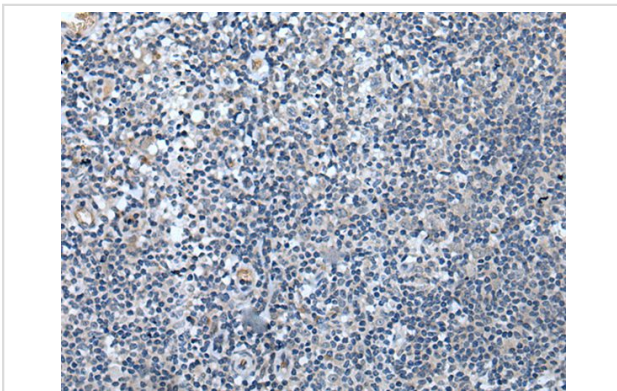
Description

Product Name	SPTB Antibody
Host Species	Rabbit
Clonality	Polyclonal
Purification	Antigen affinity purification
Applications	IHC
Species Reactivity	Hu
Specificity	The antibody detects endogenous levels of total SPTB protein.
Immunogen Type	peptide
Immunogen Description	Synthetic peptide of human SPTB
Target Name	SPTB
Other Names	EL3; HS2; SPH2; HSPTB1
Accession No.	Swiss-Prot#: P11277NCBI Gene ID: 6710
Uniprot	P11277
GeneID	6710;
Concentration	1mg/ml
Formulation	Rabbit IgG in pH7.4 PBS, 0.05% NaN ₃ , 40% Glycerol.
Storage	Store at -20°C

Application Details

Immunohistochemistry: 1: 20-100

Images



The image on the left is immunohistochemistry of paraffin-embedded Human tonsil tissue using SPTB Antibody at dilution 1/40, on the right is treated with synthetic peptide. (Original magnification: x200)

Background

This locus encodes a member of the spectrin gene family. Spectrin proteins, along with ankyrin, play a role in cell membrane organization and stability. The protein encoded by this locus functions in stability of erythrocyte membranes, and mutations in this gene have been associated with spherocytosis type 2, hereditary elliptocytosis, and neonatal hemolytic anemia. Alternatively spliced transcript variants have been described.?

Note: This product is for in vitro research use only