

Description

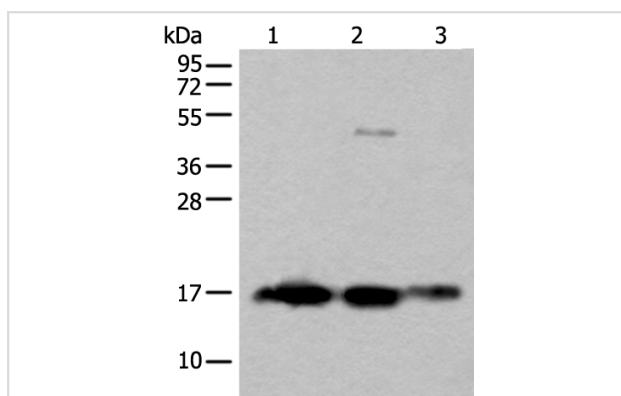
Product Name	SNCB Antibody
Host Species	Rabbit
Clonality	Polyclonal
Purification	Antigen affinity purification
Applications	IHC WB
Species Reactivity	Hu Rt
Specificity	The antibody detects endogenous levels of total SNCB protein.
Immunogen Type	peptide
Immunogen Description	Synthetic peptide of human SNCB
Target Name	SNCB
Accession No.	Swiss-Prot#: Q16143NCBI Gene ID: 6620
Uniprot	Q16143
GeneID	6620;
Calculated MW	14kd
Concentration	1.1mg/ml
Formulation	Rabbit IgG in pH7.4 PBS, 0.05% NaN ₃ , 40% Glycerol.
Storage	Store at -20°C

Application Details

Western blotting: 1:200-1000

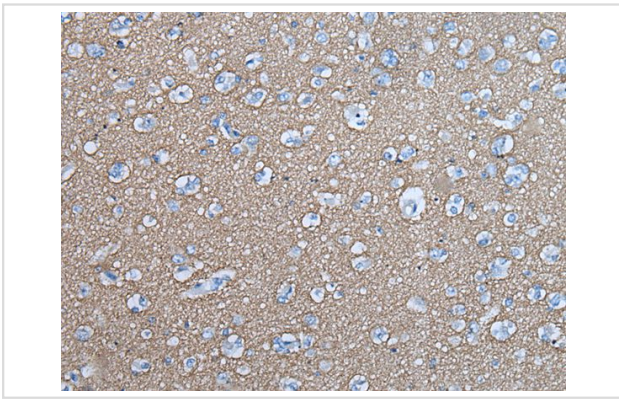
Immunohistochemistry: 1: 30-150

Images



Gel: 12%SDS-PAGE

Lysate: 40 µg, Lane 1-3: Rat brain tissueB&B-Human cerebrum tissueB&B-Human cerebella tissue lysates,
 Primary antibody:SNCB antibody at dilution 1/450,
 Secondary antibody: Goat anti rabbit IgG at 1/8000 dilution,
 Exposure time: 20 seconds



The image on the left is immunohistochemistry of paraffin-embedded Human brain tissue using SNCB Antibody at dilution 1/45, on the right is treated with synthetic peptide. (Original magnification: x200)

Background

This gene encodes a member of a small family of proteins that inhibit phospholipase D2 and may function in neuronal plasticity. The encoded protein is abundant in lesions of patients with Alzheimer disease. A mutation in this gene was found in individuals with dementia with Lewy bodies. Alternative splicing results in multiple transcript variants.

Note: This product is for in vitro research use only