

## BICD2 Antibody

Catalog No: #43847

Orders: [order@signalwayantibody.com](mailto:order@signalwayantibody.com)Support: [tech@signalwayantibody.com](mailto:tech@signalwayantibody.com)

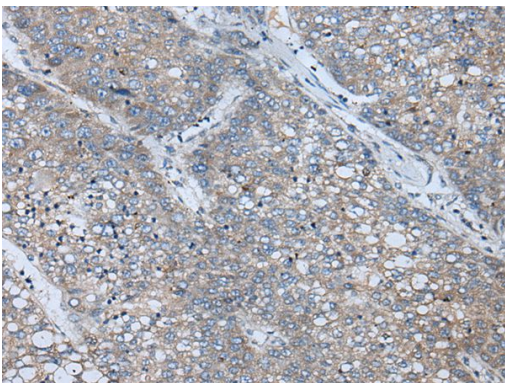
## Description

Product Name	BICD2 Antibody
Host Species	Rabbit
Clonality	Polyclonal
Purification	Antigen affinity purification
Applications	IHC
Species Reactivity	Hu
Specificity	The antibody detects endogenous levels of total BICD2 protein.
Immunogen Type	peptide
Immunogen Description	Synthetic peptide of human BICD2
Target Name	BICD2
Other Names	SMALED2; bA526D8.1
Accession No.	Swiss-Prot#: Q8TD16NCBI Gene ID: 23299
Uniprot	Q8TD16
GeneID	23299;
Concentration	1.7mg/ml
Formulation	Rabbit IgG in pH7.4 PBS, 0.05% NaN <sub>3</sub> , 40% Glycerol.
Storage	Store at -20°C

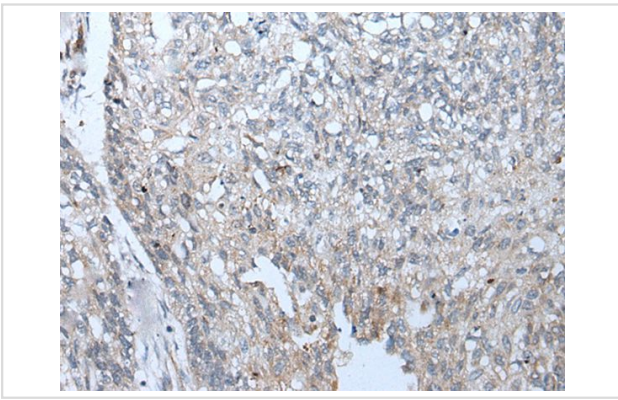
## Application Details

Immunohistochemistry: 1: 100-300

## Images



The image on the left is immunohistochemistry of paraffin-embedded Human liver cancer tissue using BICD2 Antibody at dilution 1/100, on the right is treated with synthetic peptide. (Original magnification: x200)



The image on the left is immunohistochemistry of paraffin-embedded Human lung cancer tissue using BICD2 Antibody at dilution 1/100, on the right is treated with synthetic peptide. (Original magnification: x200)

## Background

This gene is one of two human homologs of *Drosophila bicaudal-D* and a member of the Bicoid family. It has been implicated in dynein-mediated, minus end-directed motility along microtubules. It has also been reported to be a phosphorylation target of NIMA related kinase 8. Two alternative splice variants have been described.

Note: This product is for in vitro research use only