

## BMP1 Antibody

Catalog No: #43850

Orders: [order@signalwayantibody.com](mailto:order@signalwayantibody.com)Support: [tech@signalwayantibody.com](mailto:tech@signalwayantibody.com)

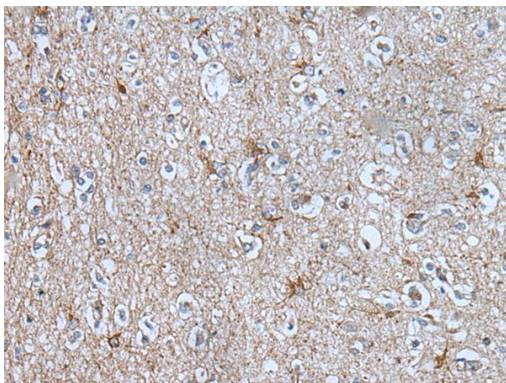
## Description

Product Name	BMP1 Antibody
Host Species	Rabbit
Clonality	Polyclonal
Purification	Antigen affinity purification
Applications	IHC
Species Reactivity	Hu Ms
Specificity	The antibody detects endogenous levels of total BMP1 protein.
Immunogen Type	peptide
Immunogen Description	Synthetic peptide of human BMP1
Target Name	BMP1
Other Names	PCP; TLD; OI13; PCP2; PCOLC
Accession No.	Swiss-Prot#: P13497NCBI Gene ID: 649
Uniprot	P13497
GeneID	649;
Concentration	2.6mg/ml
Formulation	Rabbit IgG in pH7.4 PBS, 0.05% NaN <sub>3</sub> , 40% Glycerol.
Storage	Store at -20°C

## Application Details

Immunohistochemistry: 1: 100-300

## Images



The image on the left is immunohistochemistry of paraffin-embedded Human brain tissue using BMP1 Antibody at dilution 1/100, on the right is treated with synthetic peptide. (Original magnification: x200)

## Background

This gene encodes a protein that is capable of inducing formation of cartilage in vivo. Although other bone morphogenetic proteins are members of the TGF-beta superfamily, this gene encodes a protein that is not closely related to other known growth factors. This gene is expressed as alternatively spliced variants that share an N-terminal protease domain but differ in their C-terminal region.?

---

Note: This product is for in vitro research use only