

## BMP2 Antibody

Catalog No: #43851

Orders: order@signalwayantibody.com

Support: tech@signalwayantibody.com

## Description

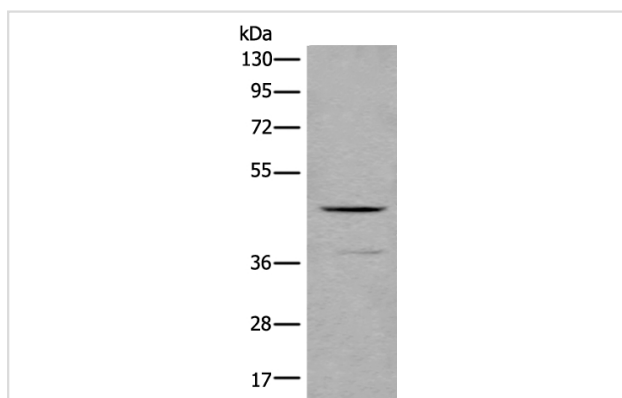
Product Name	BMP2 Antibody
Host Species	Rabbit
Clonality	Polyclonal
Purification	Antigen affinity purification
Applications	IHC WB
Species Reactivity	Hu
Specificity	The antibody detects endogenous levels of total BMP2 protein.
Immunogen Type	peptide
Immunogen Description	Synthetic peptide of human BMP2
Target Name	BMP2
Other Names	BDA2; BMP2A
Accession No.	Swiss-Prot#: P12643NCBI Gene ID: 650
Uniprot	P12643
GeneID	650;
Calculated MW	45kd
Concentration	1.5mg/ml
Formulation	Rabbit IgG in pH7.4 PBS, 0.05% NaN <sub>3</sub> , 40% Glycerol.
Storage	Store at -20°C

## Application Details

Western blotting: 1:500-2000

Immunohistochemistry: 1: 100-200

## Images



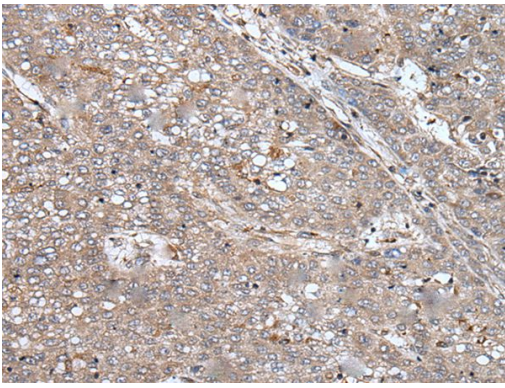
Gel: 8%SDS-PAGE

Lysate: 40 µg, Lane: Human fetal liver tissue lysate,

Primary antibody: BMP2 antibody at dilution 1/600,

Secondary antibody: Goat anti rabbit IgG at 1/8000 dilution,

Exposure time: 10 seconds



The image on the left is immunohistochemistry of paraffin-embedded Human liver cancer tissue using BMP2 Antibody at dilution 1/100, on the right is treated with synthetic peptide. (Original magnification: x200)

## Background

This gene encodes a member of the transforming growth factor-beta (TGFB) superfamily. The encoded preproprotein is proteolytically processed to generate each subunit of the disulfide-linked homodimer, which induces bone and cartilage formation.

Note: This product is for in vitro research use only