

BMP4 Antibody

Catalog No: #43852

Orders: order@signalwayantibody.com

Support: tech@signalwayantibody.com

Description

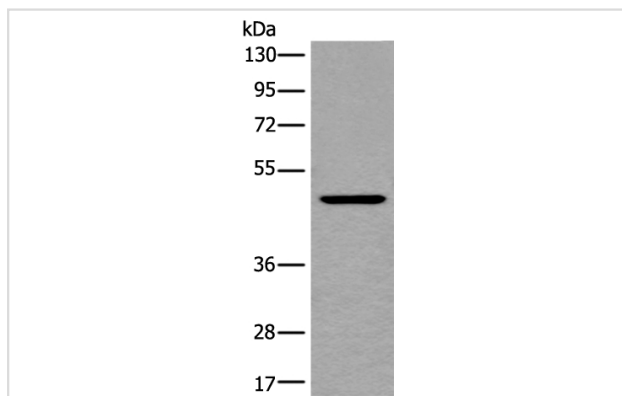
Product Name	BMP4 Antibody
Host Species	Rabbit
Clonality	Polyclonal
Purification	Antigen affinity purification
Applications	IHC WB
Species Reactivity	Hu Ms Rt
Specificity	The antibody detects endogenous levels of total BMP4 protein.
Immunogen Type	peptide
Immunogen Description	Synthetic peptide of human BMP4
Target Name	BMP4
Other Names	ZYME; BMP2B; OFC11; BMP2B1; MCOPS6
Accession No.	Swiss-Prot#: P12644NCBI Gene ID: 652
Uniprot	P12644
GeneID	652;
Calculated MW	47kd
Concentration	0.5mg/ml
Formulation	Rabbit IgG in pH7.4 PBS, 0.05% NaN ₃ , 40% Glycerol.
Storage	Store at -20°C

Application Details

Western blotting: 1:200-1000

Immunohistochemistry: 1: 20-100

Images



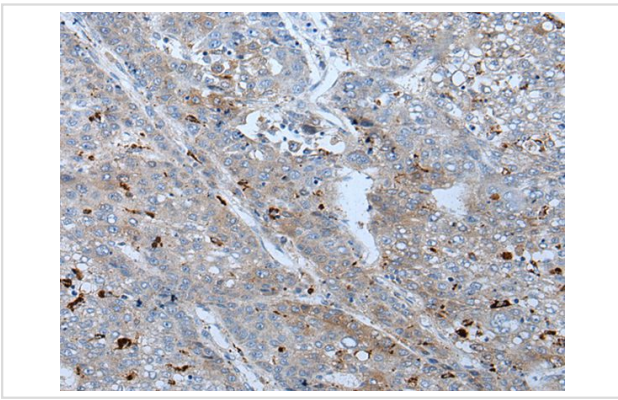
Gel: 8%SDS-PAGE

Lysate: 40 µg, Lane: HeLa cell lysate,

Primary antibody: BMP4 antibody at dilution 1/200,

Secondary antibody: Goat anti rabbit IgG at 1/8000 dilution,

Exposure time: 1 minute



The image on the left is immunohistochemistry of paraffin-embedded Human liver cancer tissue using BMP4 Antibody at dilution 1/25, on the right is treated with synthetic peptide. (Original magnification: x200)

Background

This gene encodes a member of the bone morphogenetic protein (BMP) family of proteins, which is part of the transforming growth factor-beta (TGF-beta) superfamily. Members of the BMP family play an important role in bone and cartilage development. The encoded preproprotein is proteolytically processed to generate each subunit of the disulfide-linked homodimer. Mutations in this gene are associated with orofacial cleft and microphthalmia in human patients. The encoded protein may also be involved in the pathology of multiple cardiovascular diseases and human cancers. Alternative splicing results in multiple transcript variants.

Note: This product is for in vitro research use only