

BRD3 Antibody

Catalog No: #43853

Orders: order@signalwayantibody.comSupport: tech@signalwayantibody.com

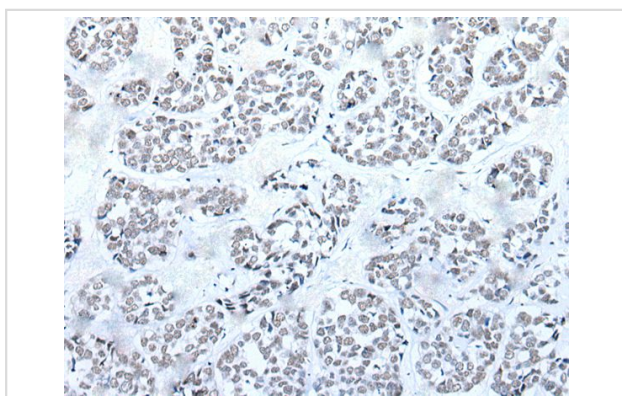
Description

Product Name	BRD3 Antibody
Host Species	Rabbit
Clonality	Polyclonal
Purification	Antigen affinity purification
Applications	IHC
Species Reactivity	Hu Ms
Specificity	The antibody detects endogenous levels of total BRD3 protein.
Immunogen Type	peptide
Immunogen Description	Synthetic peptide of human BRD3
Target Name	BRD3
Other Names	ORFX; RING3L
Accession No.	Swiss-Prot#: Q15059NCBI Gene ID: 8019
Uniprot	Q15059
GeneID	8019;
Concentration	1.5mg/ml
Formulation	Rabbit IgG in pH7.4 PBS, 0.05% NaN ₃ , 40% Glycerol.
Storage	Store at -20°C

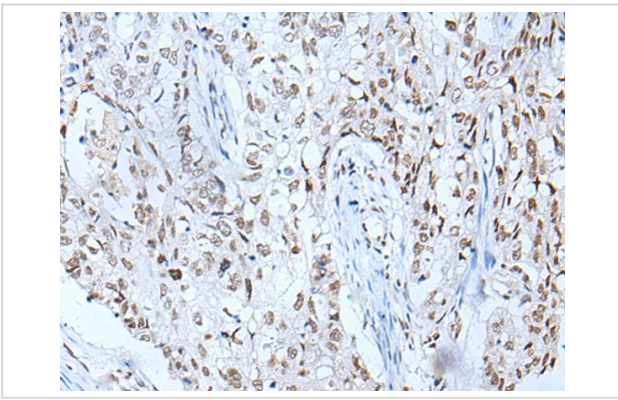
Application Details

Immunohistochemistry: 1: 100-200

Images



The image on the left is immunohistochemistry of paraffin-embedded Human esophagus cancer tissue using BRD3 Antibody at dilution 1/100, on the right is treated with synthetic peptide. (Original magnification: x200)



The image on the left is immunohistochemistry of paraffin-embedded Human lung cancer tissue using BRD3 Antibody at dilution 1/100, on the right is treated with synthetic peptide. (Original magnification: x200)

Background

This gene was identified based on its homology to the gene encoding the RING3 protein, a serine/threonine kinase. The gene localizes to 9q34, a region which contains several major histocompatibility complex (MHC) genes. The function of the encoded protein is not known.

Note: This product is for in vitro research use only