

BRISK2 Antibody

Catalog No: #43854

Orders: order@signalwayantibody.comSupport: tech@signalwayantibody.com

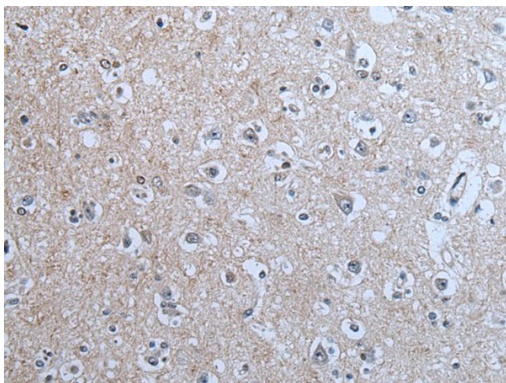
Description

Product Name	BRISK2 Antibody
Host Species	Rabbit
Clonality	Polyclonal
Purification	Antigen affinity purification
Applications	IHC
Species Reactivity	Hu
Specificity	The antibody detects endogenous levels of total BRISK2 protein.
Immunogen Type	peptide
Immunogen Description	Synthetic peptide of human BRISK2
Target Name	BRISK2
Other Names	SAD1; SADA; STK29; PEN11B; C11orf7
Accession No.	Swiss-Prot#: Q8IWQ3NCBI Gene ID: 9024
Uniprot	Q8IWQ3
GeneID	9024;
Concentration	1.7mg/ml
Formulation	Rabbit IgG in pH7.4 PBS, 0.05% NaN ₃ , 40% Glycerol.
Storage	Store at -20°C

Application Details

Immunohistochemistry: 1: 100-200

Images



The image on the left is immunohistochemistry of paraffin-embedded Human brain tissue using BRISK2 Antibody at dilution 1/100, on the right is treated with synthetic peptide. (Original magnification: x200)

Background

BRISK2 (BR serine/threonine kinase 2), also known as SAD1, STK29 or PEN11B, is a 736 amino acid protein that contains one protein kinase domain and is preferentially expressed in brain and testis. One of several members of the Ser/Thr protein kinase family, BRISK2 uses magnesium as a cofactor to catalyze the ATP-dependent phosphorylation of target proteins and is thought to be involved in microtubule assembly, neuronal polarization and synaptic development. Additionally, BRISK2 may function as an autoantigen involved in small-cell lung cancer-associated limbic encephalitis. Five

isoforms of BRSK2 exist due to alternative splicing events.

Note: This product is for in vitro research use only