

RPF2 Antibody

Catalog No: #43856

Orders: order@signalwayantibody.com

Support: tech@signalwayantibody.com

Description

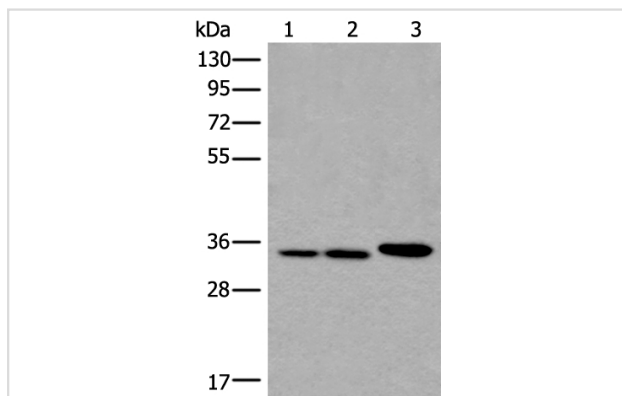
Product Name	RPF2 Antibody
Host Species	Rabbit
Clonality	Polyclonal
Purification	Antigen affinity purification
Applications	IHC WB
Species Reactivity	Hu
Specificity	The antibody detects endogenous levels of total RPF2 protein.
Immunogen Type	peptide
Immunogen Description	Synthetic peptide of human RPF2
Target Name	RPF2
Other Names	BXDC1; bA397G5.4
Accession No.	Swiss-Prot#: Q9H7B2NCBI Gene ID: 84154
Uniprot	Q9H7B2
GeneID	84154;
Calculated MW	36kd
Concentration	1mg/ml
Formulation	Rabbit IgG in pH7.4 PBS, 0.05% NaN ₃ , 40% Glycerol.
Storage	Store at -20°C

Application Details

Western blotting: 1:200-1000

Immunohistochemistry: 1: 30-150

Images



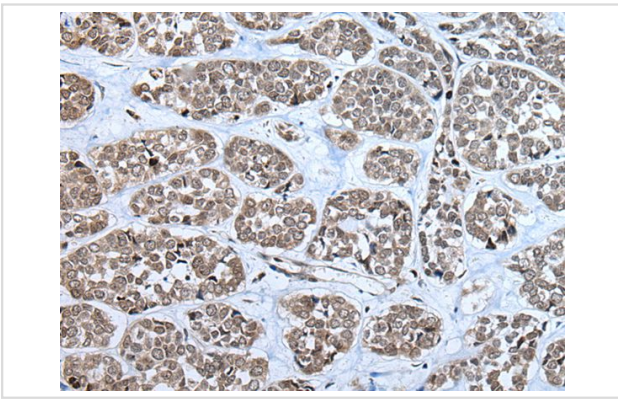
Gel: 8%SDS-PAGE

Lysate: 40 µg, Lane 1-3: A549, HeLa and K562 cell lysates,

Primary antibody: RPF2 antibody at dilution 1/400,

Secondary antibody: Goat anti rabbit IgG at 1/8000 dilution,

Exposure time: 5 seconds



The image on the left is immunohistochemistry of paraffin-embedded Human esophagus cancer tissue using RPF2 Antibody at dilution 1/40, on the right is treated with synthetic peptide. (Original magnification: x200)

Background

BXDC1 (Brix domain-containing protein 1) is a 306 amino acid protein encoded by the human gene BXDC1. BXDC1 is a nuclear protein that contains one Brix domain. Brix domain containing proteins represent a family of proteins involved in the biogenesis of large ribosomal subunits. The Brix domain is a region with homology to the yeast protein Pitx1 (Ribosome biogenesis protein BRX1). Pitx1 is part of a complex that includes RPF1, RPF2 and SSF1 or SSF2. This complex is required for the biogenesis of the 60S ribosomal subunit.

Note: This product is for in vitro research use only