

ENPP2 Antibody

Catalog No: #43857

Orders: order@signalwayantibody.com

Support: tech@signalwayantibody.com

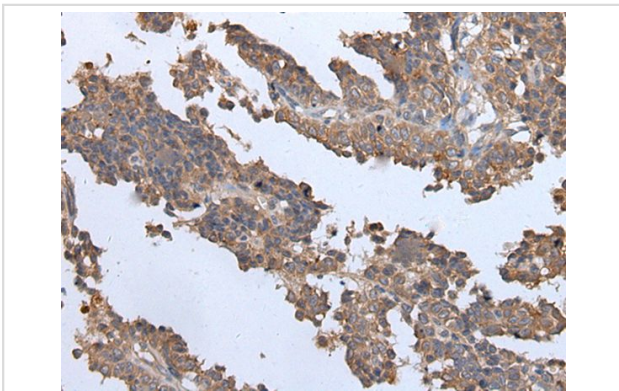
Description

Product Name	ENPP2 Antibody
Host Species	Rabbit
Clonality	Polyclonal
Purification	Antigen affinity purification
Applications	IHC
Species Reactivity	Hu
Specificity	The antibody detects endogenous levels of total ENPP2 protein.
Immunogen Type	peptide
Immunogen Description	Synthetic peptide of human ENPP2
Target Name	ENPP2
Other Names	ATX; NPP2; ATX-X; PDNP2; LysoPLD; AUTOTAXIN; PD-IALPHA
Accession No.	Swiss-Prot#: Q13822NCBI Gene ID: 5168
Uniprot	Q13822
GeneID	5168;
Concentration	0.9mg/ml
Formulation	Rabbit IgG in pH7.4 PBS, 0.05% NaN ₃ , 40% Glycerol.
Storage	Store at -20°C

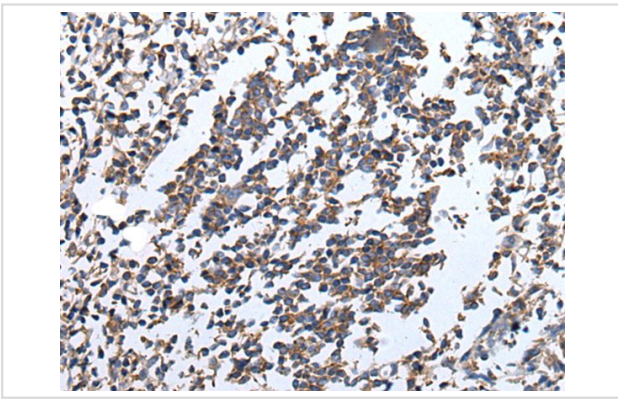
Application Details

Immunohistochemistry: 1: 20-100

Images



The image on the left is immunohistochemistry of paraffin-embedded Human ovarian cancer tissue using ENPP2 Antibody at dilution 1/35, on the right is treated with synthetic peptide. (Original magnification: x200)



The image on the left is immunohistochemistry of paraffin-embedded Human tonsil tissue using ENPP2 Antibody at dilution 1/35, on the right is treated with synthetic peptide. (Original magnification: x200)

Background

The protein encoded by this gene functions as both a phosphodiesterase, which cleaves phosphodiester bonds at the 5' end of oligonucleotides, and a phospholipase, which catalyzes production of lysophosphatidic acid (LPA) in extracellular fluids. LPA evokes growth factor-like responses including stimulation of cell proliferation and chemotaxis. This gene product stimulates the motility of tumor cells and has angiogenic properties, and its expression is upregulated in several kinds of carcinomas. The gene product is secreted and further processed to make the biologically active form. Several alternatively spliced transcript variants encoding different isoforms have been identified.

Note: This product is for in vitro research use only