

SFR1 Antibody

Catalog No: #43861

Orders: order@signalwayantibody.comSupport: tech@signalwayantibody.com

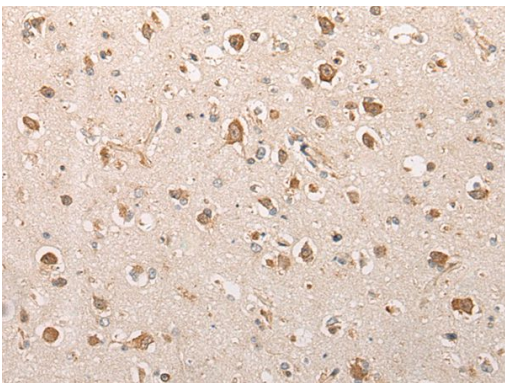
Description

Product Name	SFR1 Antibody
Host Species	Rabbit
Clonality	Polyclonal
Purification	Antigen affinity purification
Applications	IHC
Species Reactivity	Hu
Specificity	The antibody detects endogenous levels of total SFR1 protein.
Immunogen Type	peptide
Immunogen Description	Synthetic peptide of human SFR1
Target Name	SFR1
Other Names	MEI5; MEIR5; C10orf78; bA373N18.1
Accession No.	Swiss-Prot#: Q86XK3NCBI Gene ID: 119392
Uniprot	Q86XK3
GeneID	119392;
Concentration	0.5mg/ml
Formulation	Rabbit IgG in pH7.4 PBS, 0.05% NaN ₃ , 40% Glycerol.
Storage	Store at -20°C

Application Details

Immunohistochemistry: 1: 20-100

Images



The image on the left is immunohistochemistry of paraffin-embedded Human brain tissue using SFR1 Antibody at dilution 1/30, on the right is treated with synthetic peptide. (Original magnification: x200)

Background

Component of the SWI5-SFR1 complex, a complex required for double-strand break repair via homologous recombination (PubMed:21252223). Acts as a transcriptional modulator for ESR1 (PubMed:23874500).

Note: This product is for in vitro research use only