

## VPS51 Antibody

Catalog No: #43864

Orders: [order@signalwayantibody.com](mailto:order@signalwayantibody.com)Support: [tech@signalwayantibody.com](mailto:tech@signalwayantibody.com)

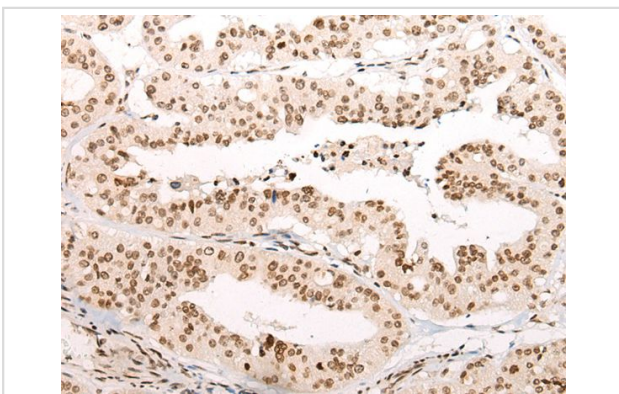
## Description

Product Name	VPS51 Antibody
Host Species	Rabbit
Clonality	Polyclonal
Purification	Antigen affinity purification
Applications	IHC
Species Reactivity	Hu Ms
Specificity	The antibody detects endogenous levels of total VPS51 protein.
Immunogen Type	peptide
Immunogen Description	Synthetic peptide of human VPS51
Target Name	VPS51
Other Names	FFR; ANG2; ANG3; C11orf2; C11orf3
Accession No.	Swiss-Prot#: Q9UID3NCBI Gene ID: 738
Uniprot	Q9UID3
GeneID	738;
Concentration	1.6mg/ml
Formulation	Rabbit IgG in pH7.4 PBS, 0.05% NaN <sub>3</sub> , 40% Glycerol.
Storage	Store at -20°C

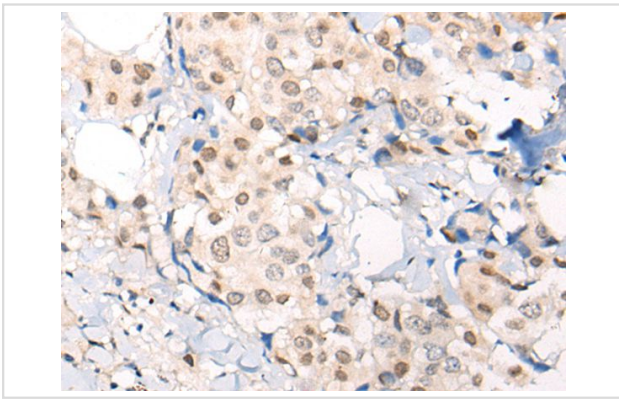
## Application Details

Immunohistochemistry: 1: 100-200

## Images



The image on the left is immunohistochemistry of paraffin-embedded Human liver cancer tissue using VPS51 Antibody at dilution 1/100, on the right is treated with synthetic peptide. (Original magnification: x200)



The image on the left is immunohistochemistry of paraffin-embedded Human breast cancer tissue using VPS51 Antibody at dilution 1/100, on the right is treated with synthetic peptide. (Original magnification: x200)

## Background

This gene encodes a member of the vacuolar protein sorting-associated protein 51 family. The encoded protein is a component of the Golgi-associated retrograde protein complex which acts as a tethering factor for carriers in retrograde transport from the early and late endosomes to the trans-Golgi network. Alternative splicing results in multiple transcript variants.

Note: This product is for in vitro research use only