

ANAPC15 Antibody

Catalog No: #43865

Orders: order@signalwayantibody.comSupport: tech@signalwayantibody.com

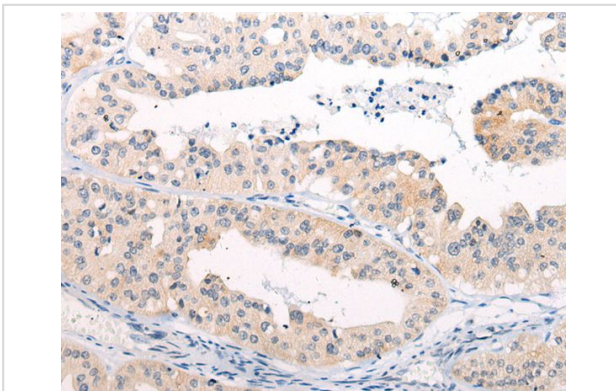
Description

Product Name	ANAPC15 Antibody
Host Species	Rabbit
Clonality	Polyclonal
Purification	Antigen affinity purification
Applications	IHC
Species Reactivity	Hu Ms Rt
Specificity	The antibody detects endogenous levels of total ANAPC15 protein.
Immunogen Type	peptide
Immunogen Description	Synthetic peptide of human ANAPC15
Target Name	ANAPC15
Other Names	APC15; HSPC020; C11orf51
Accession No.	Swiss-Prot#: P60006NCBI Gene ID: 25906
Uniprot	P60006
GeneID	25906;
Concentration	1.2mg/ml
Formulation	Rabbit IgG in pH7.4 PBS, 0.05% NaN ₃ , 40% Glycerol.
Storage	Store at -20°C

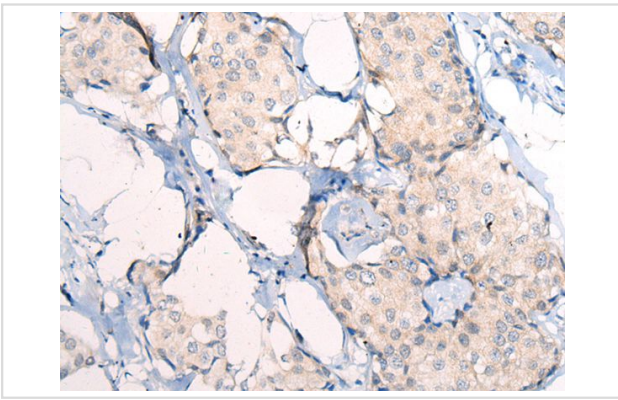
Application Details

Immunohistochemistry: 1: 30-150

Images



The image on the left is immunohistochemistry of paraffin-embedded Human liver cancer tissue using ANAPC15 Antibody at dilution 1/50, on the right is treated with synthetic peptide. (Original magnification: x200)



The image on the left is immunohistochemistry of paraffin-embedded Human breast cancer tissue using ANAPC15 Antibody at dilution 1/50, on the right is treated with synthetic peptide. (Original magnification: x200)

Background

ANAPC15 is a component of the anaphase promoting complex/cyclosome (APC/C), a cell cycle-regulated E3 ubiquitin ligase that controls progression through mitosis and the G1 phase of the cell cycle. In the complex, it plays a role in the release of the mitotic checkpoint complex (MCC) from the APC/C: not required for APC/C activity itself, but promotes the turnover of CDC20 and MCC on the APC/C, thereby participating to the responsiveness of the spindle assembly checkpoint. It is also required for degradation of CDC20.

Note: This product is for in vitro research use only