

C14orf2 Antibody

Catalog No: #43868

Orders: order@signalwayantibody.com

Support: tech@signalwayantibody.com

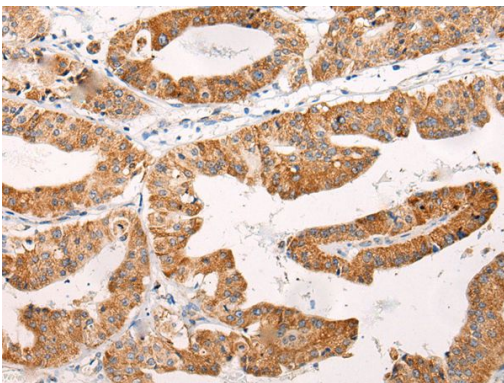
Description

Product Name	C14orf2 Antibody
Host Species	Rabbit
Clonality	Polyclonal
Purification	Antigen affinity purification
Applications	IHC
Species Reactivity	Hu
Specificity	The antibody detects endogenous levels of total C14orf2 protein.
Immunogen Type	peptide
Immunogen Description	Synthetic peptide of human C14orf2
Target Name	C14orf2
Other Names	MP68; PLPM
Accession No.	Swiss-Prot#: P56378NCBI Gene ID: 9556
Uniprot	P56378
GeneID	9556;
Concentration	1mg/ml
Formulation	Rabbit IgG in pH7.4 PBS, 0.05% NaN ₃ , 40% Glycerol.
Storage	Store at -20°C

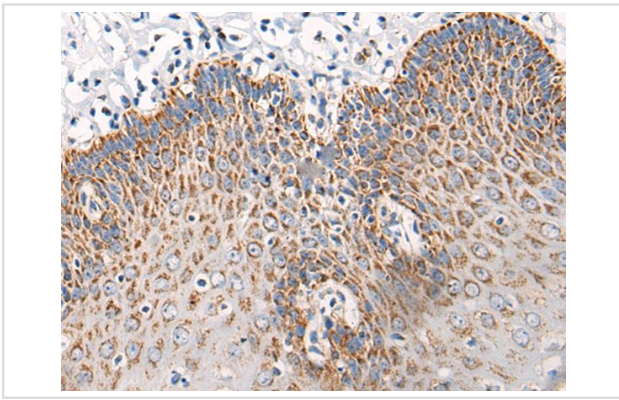
Application Details

Immunohistochemistry: 1: 30-150

Images



The image on the left is immunohistochemistry of paraffin-embedded Human liver cancer tissue using C14orf2 Antibody at dilution 1/40, on the right is treated with synthetic peptide. (Original magnification: x200)



The image on the left is immunohistochemistry of paraffin-embedded Human esophagus cancer tissue using C14orf2 Antibody at dilution 1/40, on the right is treated with synthetic peptide. (Original magnification: x200)

Background

C14orf2, also known as MP68, MP68 is a 58 amino acid mitochondrial protein that belongs to the small mitochondrial proteolipid family. The gene encoding MP68 maps to human chromosome 14, which houses over 700 genes and comprises nearly 3.5% of the human genome. Chromosome 14 encodes the presenilin 1 (PSEN1) gene, which is one of the three key genes associated with the development of Alzheimer's disease (AD). The SERPINA1 gene is also located on chromosome 14 and, when defective, leads to the genetic disorder α 1-antitrypsin deficiency, which is characterized by severe lung complications and liver dysfunction.

Note: This product is for in vitro research use only