

WDFY2 Antibody

Catalog No: #43896

Orders: order@signalwayantibody.comSupport: tech@signalwayantibody.com

Description

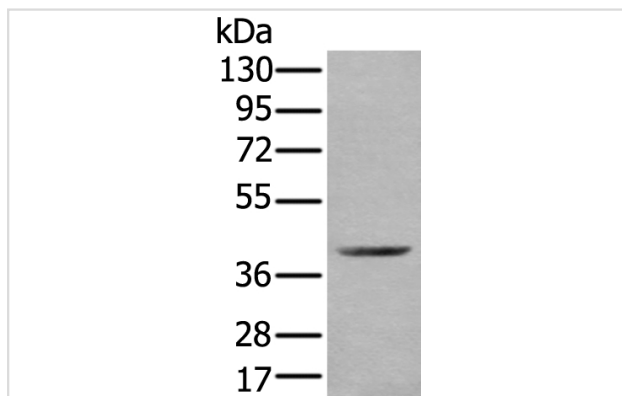
Product Name	WDFY2 Antibody
Host Species	Rabbit
Clonality	Polyclonal
Purification	Antigen affinity purification
Applications	IHC WB
Species Reactivity	Hu Ms
Specificity	The antibody detects endogenous levels of total WDFY2 protein.
Immunogen Type	protein
Immunogen Description	Fusion protein of human WDFY2
Target Name	WDFY2
Other Names	PROF; WDF2; ZFYVE22
Accession No.	Swiss-Prot#: Q96P53NCBI Gene ID: 115825
Uniprot	Q96P53
GeneID	115825;
Calculated MW	45kd
Concentration	0.9mg/ml
Formulation	Rabbit IgG in pH7.4 PBS, 0.05% NaN ₃ , 40% Glycerol.
Storage	Store at -20°C

Application Details

Western blotting: 1:200-1000

Immunohistochemistry: 1: 30-150

Images



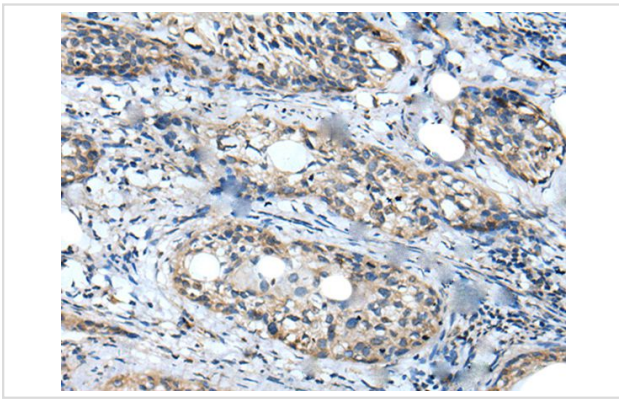
Gel: 8%SDS-PAGE

Lysate: 40 µg, Lane: Mouse kidney tissue lysate,

Primary antibody:WDFY2 antibody at dilution 1/350,

Secondary antibody: Goat anti rabbit IgG at 1/8000 dilution,

Exposure time: 15 seconds



The image on the left is immunohistochemistry of paraffin-embedded Human cervical cancer tissue using WDFY2 Antibody at dilution 1/40, on the right is treated with fusion protein. (Original magnification: x200)

Background

WD repeat and FYVE domain-containing protein 2 (WDFY2), also known as WDF2 and ZFYVE22, is a 400 amino acid protein that localizes to a set of small endosomes that are found within 100 nm from the plasma membrane. Highly conserved between species, WDFY2 consists of one FYVE-type zinc finger and seven WD repeats. The FYVE domain is a cysteine-rich domain of about 70 amino acids. Its primary role is to target signal-transducing proteins to cell membranes through binding to the membrane lipid phosphatidylinositol-3-phosphate with high specificity. WD-repeats are generally found in clusters of seven. They have no intrinsic catalytic activity, but they serve as a platform for protein-protein interactions. WDFY2 is suspected to play a critical role in the endocytic pathway.

Note: This product is for in vitro research use only