

## CLU/APOJ Antibody

Catalog No: #43901

Orders: [order@signalwayantibody.com](mailto:order@signalwayantibody.com)Support: [tech@signalwayantibody.com](mailto:tech@signalwayantibody.com)

## Description

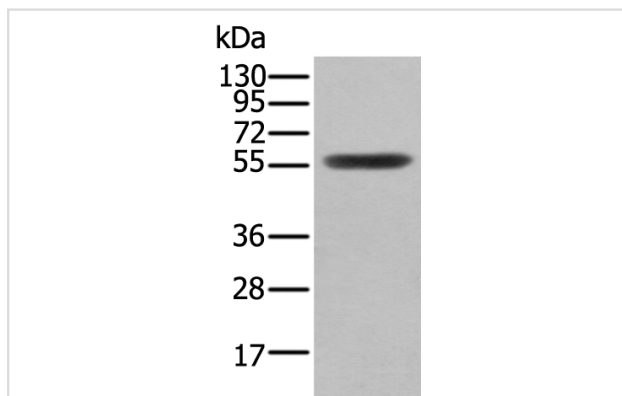
Product Name	CLU/APOJ Antibody
Host Species	Rabbit
Clonality	Polyclonal
Purification	Antigen affinity purification
Applications	IHC WB
Species Reactivity	Hu
Specificity	The antibody detects endogenous levels of total CLU/APOJ protein.
Immunogen Type	protein
Immunogen Description	Fusion protein of human CLU/APOJ
Target Name	CLU/APOJ
Other Names	CLI; AAG4; APOJ; CLU1; CLU2; KUB1; SGP2; APO-J; SGP-2; SP-40; TRPM2; TRPM-2; NA1/NA2
Accession No.	Swiss-Prot#: P10909NCBI Gene ID: 1191
Uniprot	P10909
GeneID	1191;
Calculated MW	52kd
Concentration	1.1mg/ml
Formulation	Rabbit IgG in pH7.4 PBS, 0.05% NaN <sub>3</sub> , 40% Glycerol.
Storage	Store at -20°C

## Application Details

Western blotting: 1:200-1000

Immunohistochemistry: 1: 30-150

## Images



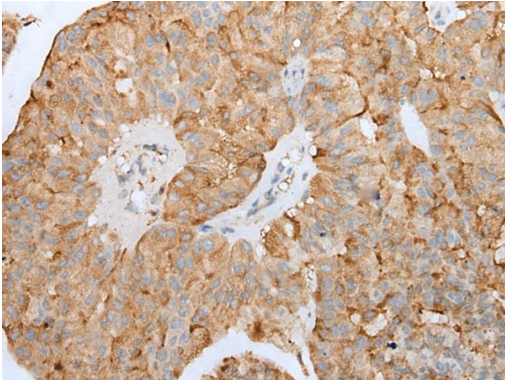
Gel: 8%SDS-PAGE

Lysate: 40 µg, Lane: Human fetal brain tissue lysate,

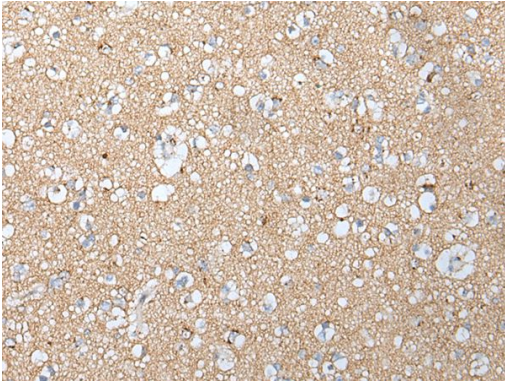
Primary antibody:CLU/APO J antibody at dilution 1/400,

Secondary antibody: Goat anti rabbit IgG at 1/8000 dilution,

Exposure time: 30 seconds



The image is immunohistochemistry of paraffin-embedded Human liver cancer tissue using CLU/APO J Antibody at dilution 1/45. (Original magnification: x200)



The image is immunohistochemistry of paraffin-embedded Human brain tissue using CLU/APO J Antibody at dilution 1/45. (Original magnification: x200)

## Background

The protein encoded by this gene is a secreted chaperone that can under some stress conditions also be found in the cell cytosol. It has been suggested to be involved in several basic biological events such as cell death, tumor progression, and neurodegenerative disorders. Alternate splicing results in both coding and non-coding variants.

Note: This product is for in vitro research use only