

SFRP5 Antibody

Catalog No: #43902

Orders: order@signalwayantibody.comSupport: tech@signalwayantibody.com

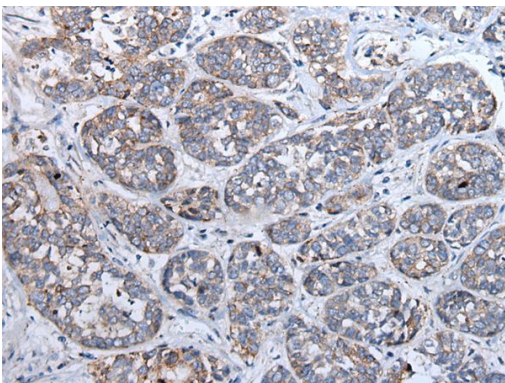
Description

| | |
|-----------------------|---|
| Product Name | SFRP5 Antibody |
| Host Species | Rabbit |
| Clonality | Polyclonal |
| Purification | Antigen affinity purification |
| Applications | IHC |
| Species Reactivity | Hu |
| Specificity | The antibody detects endogenous levels of total SFRP5 protein. |
| Immunogen Type | peptide |
| Immunogen Description | Synthetic peptide of human SFRP5 |
| Target Name | SFRP5 |
| Other Names | SARP3 |
| Accession No. | Swiss-Prot#: Q5T4F7NCBI Gene ID: 6425 |
| Uniprot | Q5T4F7 |
| GeneID | 6425; |
| Concentration | 0.9mg/ml |
| Formulation | Rabbit IgG in pH7.4 PBS, 0.05% NaN ₃ , 40% Glycerol. |
| Storage | Store at -20°C |

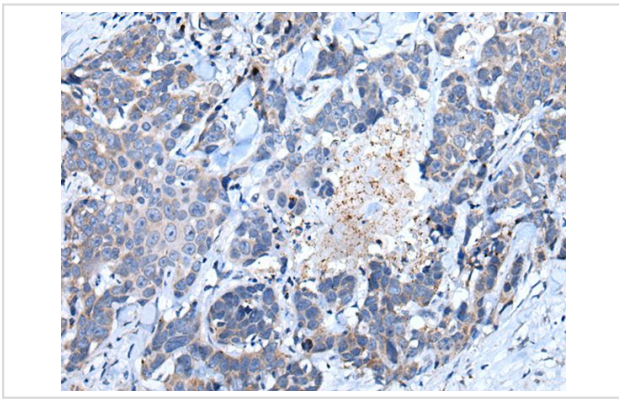
Application Details

Immunohistochemistry: 1: 20-100

Images



The image on the left is immunohistochemistry of paraffin-embedded Human esophagus cancer tissue using SFRP5 Antibody at dilution 1/35, on the right is treated with synthetic peptide. (Original magnification: x200)



The image on the left is immunohistochemistry of paraffin-embedded Human thyroid cancer tissue using SFRP5 Antibody at dilution 1/35, on the right is treated with synthetic peptide. (Original magnification: x200)

Background

Secreted frizzled-related protein 5 (SFRP5) is a member of the SFRP family that contains a cysteine-rich domain homologous to the putative Wnt-binding site of Frizzled proteins. SFRPs act as soluble modulators of Wnt signaling. SFRP5 and SFRP1 may be involved in determining the polarity of photoreceptor cells in the retina. SFRP5 is highly expressed in the retinal pigment epithelium, and moderately expressed in the pancreas.?

Note: This product is for in vitro research use only