

RAC2 Antibody

Catalog No: #43907

Orders: order@signalwayantibody.comSupport: tech@signalwayantibody.com

Description

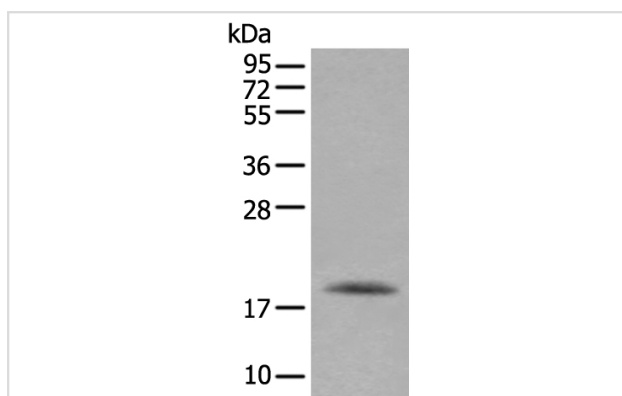
Product Name	RAC2 Antibody
Host Species	Rabbit
Clonality	Polyclonal
Purification	Antigen affinity purification
Applications	IHC WB
Species Reactivity	Hu Ms
Specificity	The antibody detects endogenous levels of total RAC2 protein.
Immunogen Description	Synthetic peptide of human RAC2
Target Name	RAC2
Other Names	Gx; EN-7; HSPC022; p21-Rac2
Accession No.	Swiss-Prot#: P15153NCBI Gene ID: 5880
Uniprot	P15153
GeneID	5880;
Calculated MW	21kd
Concentration	1mg/ml
Formulation	Rabbit IgG in pH7.4 PBS, 0.05% NaN ₃ , 40% Glycerol.
Storage	Store at -20°C

Application Details

Western blotting: 1:200-1000

Immunohistochemistry: 1: 20-100

Images



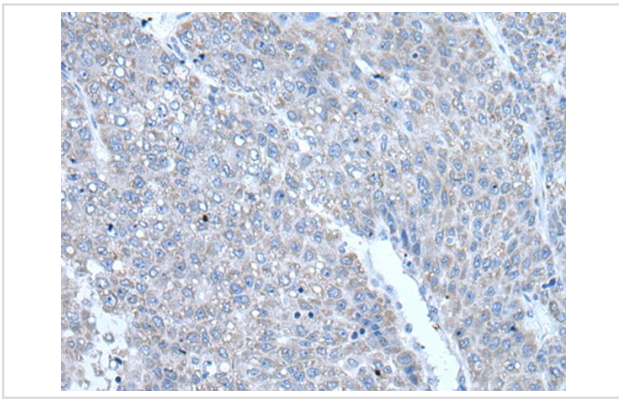
Gel: 12%SDS-PAGE

Lysate: 40 µg, Lane: Mouse heart tissue lysate,

Primary antibody: RAC2 antibody at dilution 1/300,

Secondary antibody: Goat anti rabbit IgG at 1/8000 dilution,

Exposure time: 2 minutes



The image on the left is immunohistochemistry of paraffin-embedded Human liver cancer tissue using RAC2 Antibody at dilution 1/25, on the right is treated with synthetic peptide. (Original magnification: x200)

Background

This gene encodes a member of the Ras superfamily of small guanosine triphosphate (GTP)-metabolizing proteins. The encoded protein localizes to the plasma membrane, where it regulates diverse processes, such as secretion, phagocytosis, and cell polarization. Activity of this protein is also involved in the generation of reactive oxygen species. Mutations in this gene are associated with neutrophil immunodeficiency syndrome. There is a pseudogene for this gene on chromosome 6.

Note: This product is for in vitro research use only