

## SCGB3A1 Antibody

Catalog No: #43908

Orders: [order@signalwayantibody.com](mailto:order@signalwayantibody.com)Support: [tech@signalwayantibody.com](mailto:tech@signalwayantibody.com)

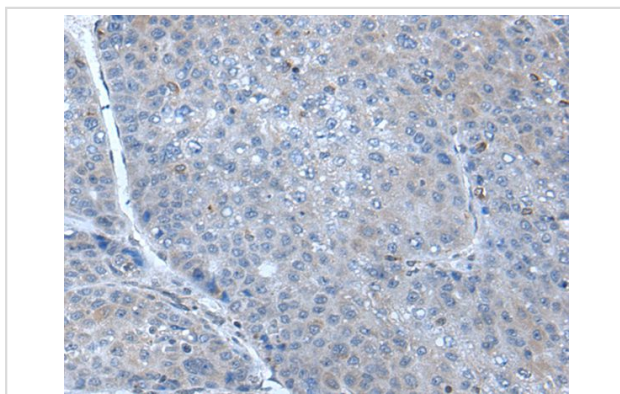
## Description

Product Name	SCGB3A1 Antibody
Host Species	Rabbit
Clonality	Polyclonal
Purification	Antigen affinity purification
Applications	IHC
Species Reactivity	Hu
Specificity	The antibody detects endogenous levels of total SCGB3A1 protein.
Immunogen Type	peptide
Immunogen Description	Synthetic peptide of human SCGB3A1
Target Name	SCGB3A1
Other Names	HIN1; HIN-1; LU105; UGRP2; PnSP-2
Accession No.	Swiss-Prot#: Q96QR1NCBI Gene ID: 92304
Uniprot	Q96QR1
GeneID	92304;
Concentration	0.6mg/ml
Formulation	Rabbit IgG in pH7.4 PBS, 0.05% NaN <sub>3</sub> , 40% Glycerol.
Storage	Store at -20°C

## Application Details

Immunohistochemistry: 1: 20-100

## Images



The image on the left is immunohistochemistry of paraffin-embedded Human liver cancer tissue using SCGB3A1 Antibody at dilution 1/25, on the right is treated with synthetic peptide. (Original magnification: x200)

## Background

Potential growth inhibitory cytokine.

---

Note: This product is for in vitro research use only