

SLC38A1 Antibody

Catalog No: #43909

Orders: order@signalwayantibody.comSupport: tech@signalwayantibody.com

Description

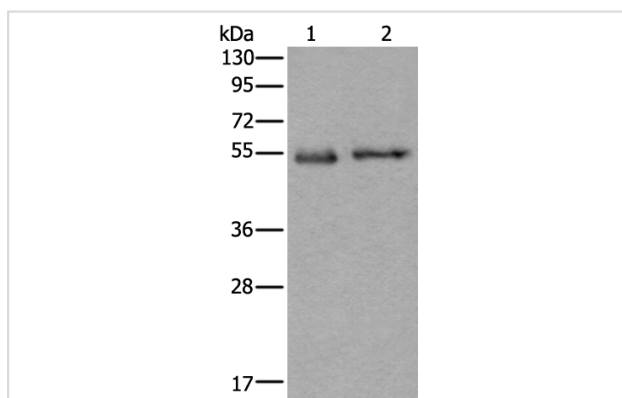
Product Name	SLC38A1 Antibody
Host Species	Rabbit
Clonality	Polyclonal
Purification	Antigen affinity purification
Applications	IHC WB
Species Reactivity	Hu
Specificity	The antibody detects endogenous levels of total SLC38A1 protein.
Immunogen Type	peptide
Immunogen Description	Synthetic peptide of human SLC38A1
Target Name	SLC38A1
Other Names	ATA1; NAT2; SAT1; SNAT1
Accession No.	Swiss-Prot#: Q9H2H9NCBI Gene ID: 81539
Uniprot	Q9H2H9
GeneID	81539;
Calculated MW	54kd
Concentration	0.6mg/ml
Formulation	Rabbit IgG in pH7.4 PBS, 0.05% NaN ₃ , 40% Glycerol.
Storage	Store at -20°C

Application Details

Western blotting: 1:200-1000

Immunohistochemistry: 1: 10-50

Images



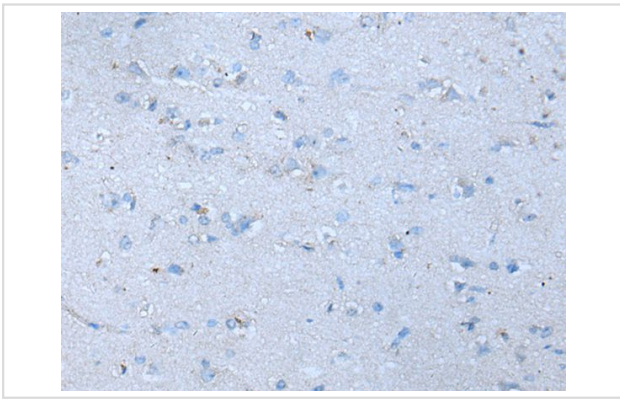
Gel: 6%SDS-PAGE

Lysate: 40 µg, Lane 1-2: Human liver cancer tissue and Human placenta tissue lysates,

Primary antibody: SLC38A1 antibody at dilution 1/250,

Secondary antibody: Goat anti rabbit IgG at 1/8000 dilution,

Exposure time: 2 minutes



The image on the left is immunohistochemistry of paraffin-embedded Human brain tissue using SLC38A1 Antibody at dilution 1/25, on the right is treated with synthetic peptide. (Original magnification: x200)

Background

Amino acid transporters play essential roles in the uptake of nutrients, production of energy, chemical metabolism, detoxification, and neurotransmitter cycling. SLC38A1 is an important transporter of glutamine, an intermediate in the detoxification of ammonia and the production of urea. Glutamine serves as a precursor for the synaptic transmitter, glutamate .

Note: This product is for in vitro research use only