

SMC2 Antibody

Catalog No: #43911

Orders: order@signalwayantibody.comSupport: tech@signalwayantibody.com

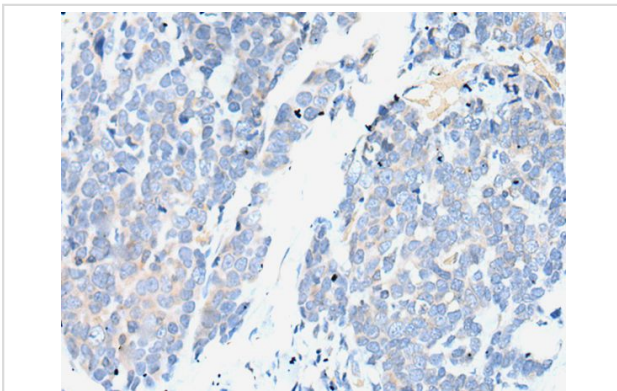
Description

Product Name	SMC2 Antibody
Host Species	Rabbit
Clonality	Polyclonal
Purification	Antigen affinity purification
Applications	IHC
Species Reactivity	Hu
Specificity	The antibody detects endogenous levels of total SMC2 protein.
Immunogen Type	peptide
Immunogen Description	Synthetic peptide of human SMC2
Target Name	SMC2
Other Names	CAPE; CAP-E; SMC-2; SMC2L1
Accession No.	Swiss-Prot#: O95347NCBI Gene ID: 10592
Uniprot	O95347
GeneID	10592;
Concentration	0.2mg/ml
Formulation	Rabbit IgG in pH7.4 PBS, 0.05% NaN ₃ , 40% Glycerol.
Storage	Store at -20°C

Application Details

Immunohistochemistry: 1: 10-50

Images



The image on the left is immunohistochemistry of paraffin-embedded Human thyroid cancer tissue using SMC2 Antibody at dilution 1/25, on the right is treated with synthetic peptide. (Original magnification: x200)

Background

Members of the structural maintenance of chromosomes, or SMC, family (e.g., SMC1A; MIM 300040) are critical for mitotic chromosome condensation in frogs and for DNA repair in mammals.

Note: This product is for in vitro research use only