

CCL14 Antibody

Catalog No: #43915

Orders: order@signalwayantibody.comSupport: tech@signalwayantibody.com

Description

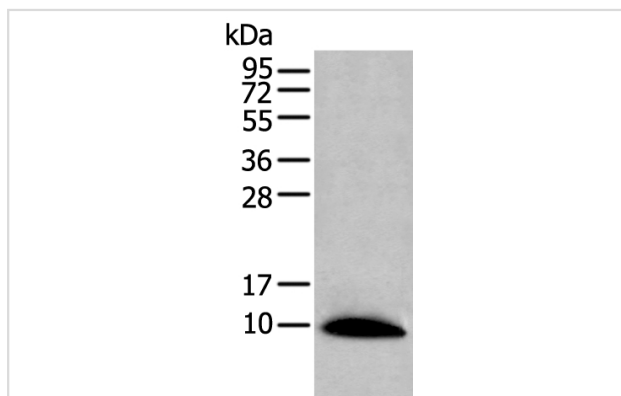
Product Name	CCL14 Antibody
Host Species	Rabbit
Clonality	Polyclonal
Purification	Antigen affinity purification
Applications	IHC WB
Species Reactivity	Hu
Specificity	The antibody detects endogenous levels of total CCL14 protein.
Immunogen Type	peptide
Immunogen Description	Synthetic peptide of human CCL14
Target Name	CCL14
Other Names	CC-1; CC-3; CKB1; MCIF; NCC2; SY14; HCC-1; HCC-3; NCC-2; SCYL2; SCYA14; HCC-1(1-74); HCC-1/HCC-3
Accession No.	Swiss-Prot#: Q16627NCBI Gene ID: 6358
Uniprot	Q16627
GeneID	6358;
Calculated MW	11kd
Concentration	1.1mg/ml
Formulation	Rabbit IgG in pH7.4 PBS, 0.05% NaN ₃ , 40% Glycerol.
Storage	Store at -20°C

Application Details

Western blotting: 1:200-1000

Immunohistochemistry: 1: 30-150

Images



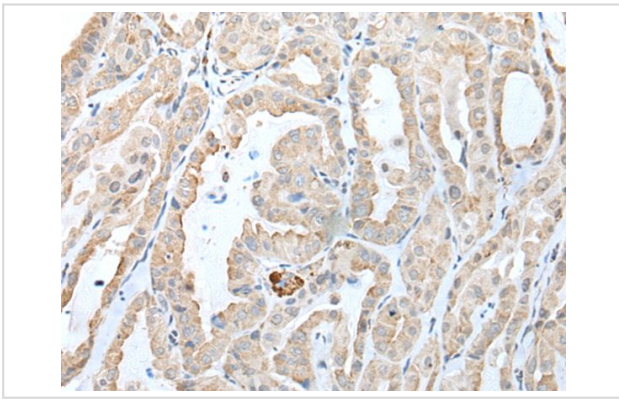
Gel: 12%SDS-PAGE

Lysate: 40 µg, Lane: Human spleen tissue lysate,

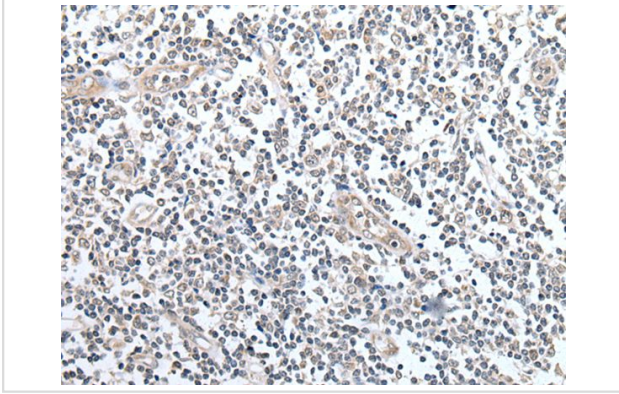
Primary antibody:CCL14 antibody at dilution 1/200 dilution,

Secondary antibody: Goat anti rabbit IgG at 1/8000 dilution,

Exposure time: 1 minute



The image on the left is immunohistochemistry of paraffin-embedded Human thyroid cancer tissue using CCL14 Antibody at dilution 1/35, on the right is treated with synthetic peptide. (Original magnification: x200)



The image on the left is immunohistochemistry of paraffin-embedded Human tonsil tissue using CCL14 Antibody at dilution 1/35, on the right is treated with synthetic peptide. (Original magnification: x200)

Background

This gene, chemokine (C-C motif) ligand 14, is one of several CC cytokine genes clustered on 17q11.2. The CC cytokines are secreted proteins characterized by two adjacent cysteines. The cytokine encoded by this gene induces changes in intracellular calcium concentration and enzyme release in monocytes. Multiple transcript variants encoding different isoforms have been found for this gene. Read-through transcripts are also expressed that include exons from the upstream cytokine gene, chemokine (C-C motif) ligand 15, and are represented as GeneID: 348249.

Note: This product is for in vitro research use only