

STK26 Antibody

Catalog No: #43920

Orders: order@signalwayantibody.com

Support: tech@signalwayantibody.com

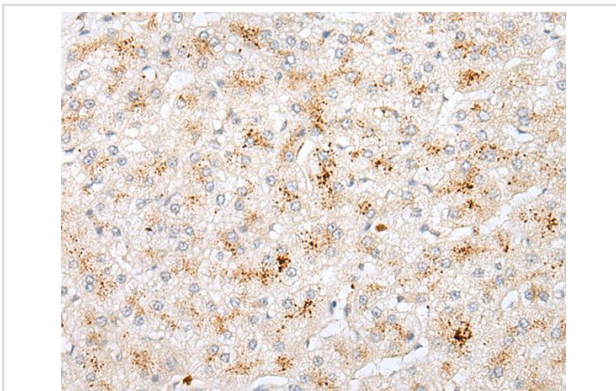
Description

Product Name	STK26 Antibody
Host Species	Rabbit
Clonality	Polyclonal
Purification	Antigen affinity purification
Applications	IHC
Species Reactivity	Hu Ms
Specificity	The antibody detects endogenous levels of total STK26 protein.
Immunogen Type	peptide
Immunogen Description	Synthetic peptide of human STK26
Target Name	STK26
Other Names	MASK; MST4
Accession No.	Swiss-Prot#: Q9P289NCBI Gene ID: 51765
Uniprot	Q9P289
GeneID	51765;
Concentration	0.7mg/ml
Formulation	Rabbit IgG in pH7.4 PBS, 0.05% NaN ₃ , 40% Glycerol.
Storage	Store at -20°C

Application Details

Immunohistochemistry: 1: 10-50

Images



The image on the left is immunohistochemistry of paraffin-embedded Human liver cancer tissue using STK26 Antibody at dilution 1/20, on the right is treated with synthetic peptide. (Original magnification: x200)

Background

The product of this gene is a member of the GCK group III family of kinases, which are a subset of the Ste20-like kinases. The encoded protein contains an amino-terminal kinase domain, and a carboxy-terminal regulatory domain that mediates homodimerization. The protein kinase localizes to the Golgi apparatus and is specifically activated by binding to the Golgi matrix protein GM130. It is also cleaved by caspase-3 in vitro, and may function in the apoptotic pathway. Several alternatively spliced transcript variants of this gene have been described, but the full-length nature of some

of these variants has not been determined.?

Note: This product is for in vitro research use only