

## GPC4 Antibody

Catalog No: #43924

Orders: [order@signalwayantibody.com](mailto:order@signalwayantibody.com)Support: [tech@signalwayantibody.com](mailto:tech@signalwayantibody.com)

## Description

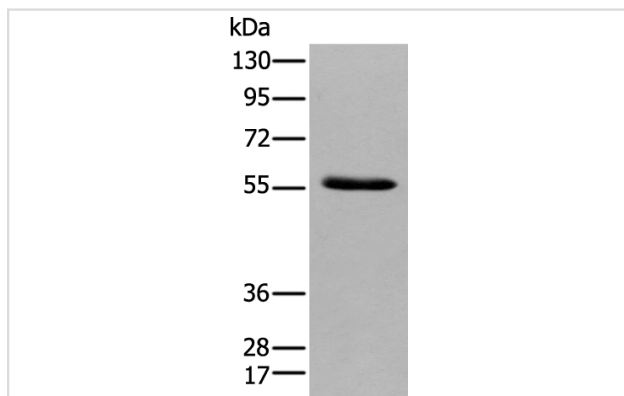
Product Name	GPC4 Antibody
Host Species	Rabbit
Clonality	Polyclonal
Purification	Antigen affinity purification
Applications	IHC WB
Species Reactivity	Hu
Specificity	The antibody detects endogenous levels of total GPC4 protein.
Immunogen Type	peptide
Immunogen Description	Synthetic peptide of human GPC4
Target Name	GPC4
Other Names	K-glypican
Accession No.	Swiss-Prot#: O75487NCBI Gene ID: 2239
Uniprot	O75487
GeneID	2239;
Calculated MW	62kd
Concentration	1.2mg/ml
Formulation	Rabbit IgG in pH7.4 PBS, 0.05% NaN <sub>3</sub> , 40% Glycerol.
Storage	Store at -20°C

## Application Details

Western blotting: 1:500-2000

Immunohistochemistry: 1: 20-100

## Images



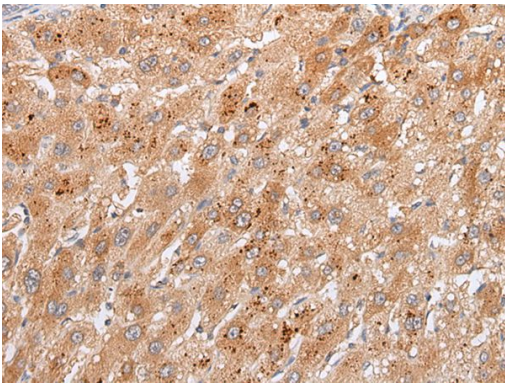
Gel: 8%SDS-PAGE

Lysate: 40 µg, Lane: Human pancreas tissue ,

Primary antibody:GPC4 antibody at dilution 1/500 dilution,

Secondary antibody: Goat anti rabbit IgG at 1/8000 dilution,

Exposure time: 1 minute



The image on the left is immunohistochemistry of paraffin-embedded Human liver cancer tissue using GPC4 Antibody at dilution 1/30, on the right is treated with synthetic peptide. (Original magnification: x200)

## Background

Cell surface heparan sulfate proteoglycans are composed of a membrane-associated protein core substituted with a variable number of heparan sulfate chains. Members of the glypican-related integral membrane proteoglycan family (GRIPS) contain a core protein anchored to the cytoplasmic membrane via a glycosyl phosphatidylinositol linkage. These proteins may play a role in the control of cell division and growth regulation. The GPC4 gene is adjacent to the 3' end of GPC3 and may also play a role in Simpson-Golabi-Behmel syndrome.

Note: This product is for in vitro research use only