

GLI1 Antibody

Catalog No: #43926

Orders: order@signalwayantibody.comSupport: tech@signalwayantibody.com

Description

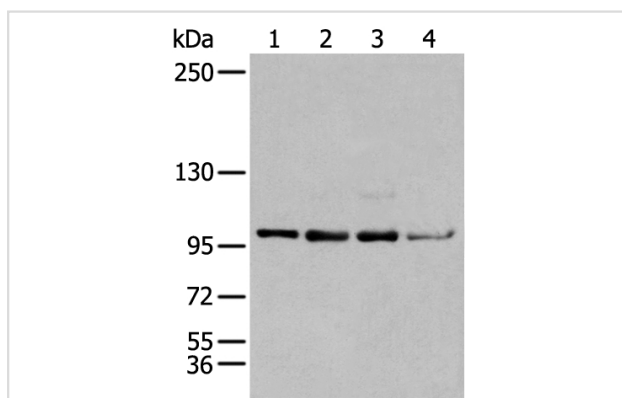
Product Name	GLI1 Antibody
Host Species	Rabbit
Clonality	Polyclonal
Purification	Antigen affinity purification
Applications	IHC WB
Species Reactivity	Hu Ms
Specificity	The antibody detects endogenous levels of total GLI1 protein.
Immunogen Type	peptide
Immunogen Description	Synthetic peptide of human GLI1
Target Name	GLI1
Other Names	GLI
Accession No.	Swiss-Prot#: P08151NCBI Gene ID: 2735
Uniprot	P08151
GeneID	2735;
Calculated MW	118kd
Concentration	0.5mg/ml
Formulation	Rabbit IgG in pH7.4 PBS, 0.05% NaN ₃ , 40% Glycerol.
Storage	Store at -20°C

Application Details

Western blotting: 1:200-1000

Immunohistochemistry: 1: 20-100

Images



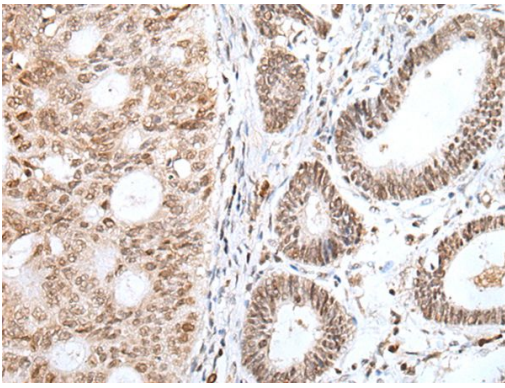
Gel: 6%SDS-PAGE

Lysate: 40 µg, Lane 1-4: NIH/3T3B£B-RajiB£B-PC-3 and Hepg2 cell,

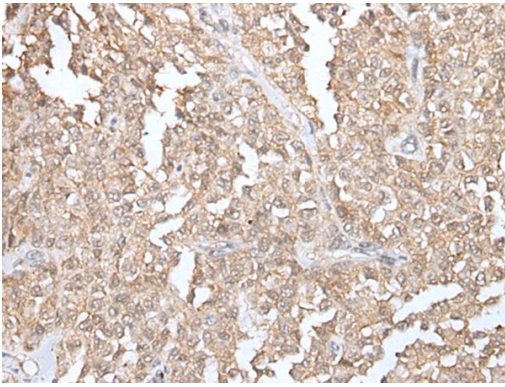
Primary antibody:GLI1 antibody at dilution 1/200 dilution,

Secondary antibody: Goat anti rabbit IgG at 1/8000 dilution,

Exposure time: 10 seconds



The image on the left is immunohistochemistry of paraffin-embedded Human gastric cancer tissue using GLI1 Antibody at dilution 1/20, on the right is treated with synthetic peptide. (Original magnification: x200)



The image on the left is immunohistochemistry of paraffin-embedded Human ovarian cancer tissue using GLI1 Antibody at dilution 1/20, on the right is treated with synthetic peptide. (Original magnification: x200)

Background

This gene encodes a member of the Kruppel family of zinc finger proteins. The encoded transcription factor is activated by the sonic hedgehog signal transduction cascade and regulates stem cell proliferation. The activity and nuclear localization of this protein is negatively regulated by p53 in an inhibitory loop. Multiple transcript variants encoding different isoforms have been found for this gene.

Note: This product is for in vitro research use only