

HOXA9 Antibody

Catalog No: #43930

Orders: order@signalwayantibody.comSupport: tech@signalwayantibody.com

Description

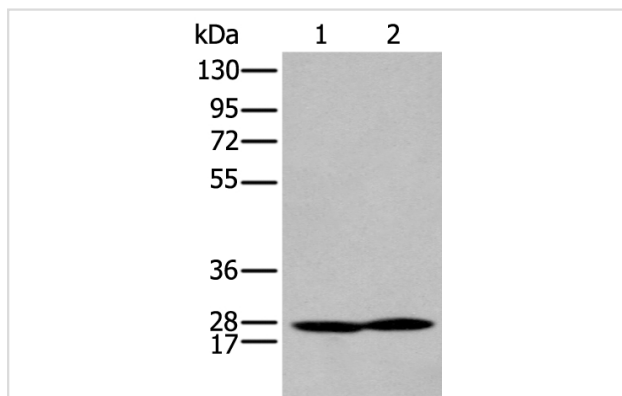
Product Name	HOXA9 Antibody
Host Species	Rabbit
Clonality	Polyclonal
Purification	Antigen affinity purification
Applications	IHC WB
Species Reactivity	Hu Ms
Specificity	The antibody detects endogenous levels of total HOXA9 protein.
Immunogen Type	peptide
Immunogen Description	Synthetic peptide of human HOXA9
Target Name	HOXA9
Other Names	HOX1; ABD-B; HOX1G; HOX1.7
Accession No.	Swiss-Prot#: P31269NCBI Gene ID: 3205
Uniprot	P31269
GeneID	3205;
Calculated MW	30kd
Concentration	0.8mg/ml
Formulation	Rabbit IgG in pH7.4 PBS, 0.05% NaN ₃ , 40% Glycerol.
Storage	Store at -20°C

Application Details

Western blotting: 1:200-1000

Immunohistochemistry: 1: 20-100

Images



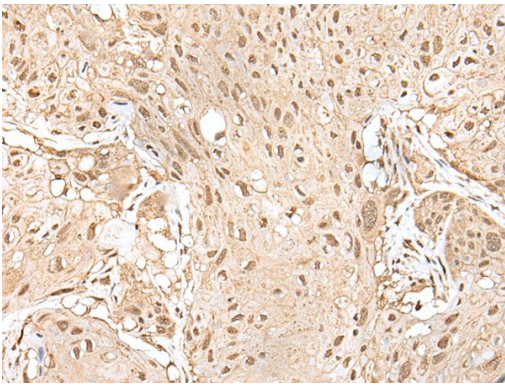
Gel: 8%SDS-PAGE

Lysate: 40 µg, Lane 1-2: Mouse kidney tissue & Mouse spleen tissue,

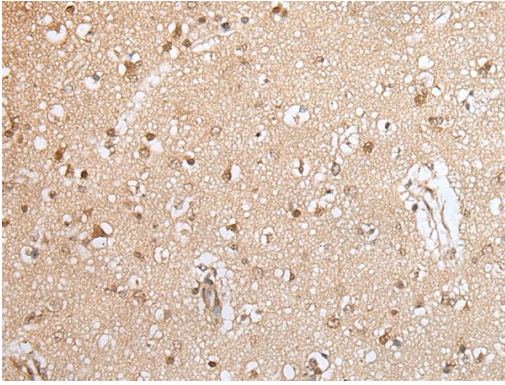
Primary antibody: HOXA9 antibody at dilution 1/300 dilution,

Secondary antibody: Goat anti rabbit IgG at 1/8000 dilution,

Exposure time: 20 seconds



The image on the left is immunohistochemistry of paraffin-embedded Human esophagus cancer tissue using HOXA9 Antibody at dilution 1/30, on the right is treated with synthetic peptide. (Original magnification: x200)



The image on the left is immunohistochemistry of paraffin-embedded Human brain tissue using HOXA9 Antibody at dilution 1/30, on the right is treated with synthetic peptide. (Original magnification: x200)

Background

This gene is part of the A cluster on chromosome 7 and encodes a DNA-binding transcription factor which may regulate gene expression, morphogenesis, and differentiation. This gene is highly similar to the abdominal-B (Abd-B) gene of *Drosophila*. A specific translocation event which causes a fusion between this gene and the NUP98 gene has been associated with myeloid leukemogenesis. Read-through transcription exists between this gene and the upstream homeobox A10 (HOXA10) gene.

Note: This product is for in vitro research use only