

PRH2 Antibody

Catalog No: #43931

Orders: order@signalwayantibody.com

Support: tech@signalwayantibody.com

Description

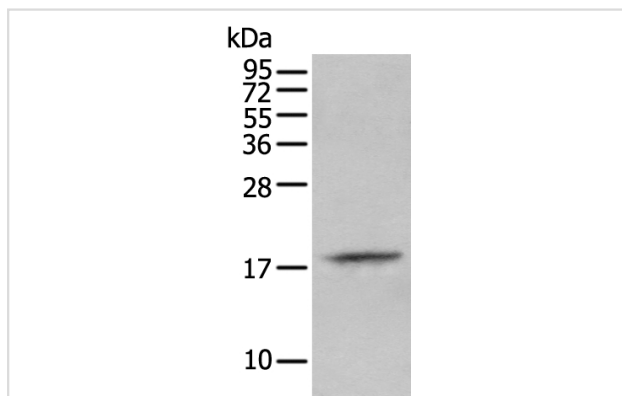
Product Name	PRH2 Antibody
Host Species	Rabbit
Clonality	Polyclonal
Purification	Antigen affinity purification
Applications	IHC WB
Species Reactivity	Hu
Specificity	The antibody detects endogenous levels of total PRH2 protein.
Immunogen Type	peptide
Immunogen Description	Synthetic peptide of human PRH2
Target Name	PRH2
Other Names	Pr; pa; PRH1; db-s; PIF-S; pr1/Pr2; PRP-1/PRP-2
Accession No.	Swiss-Prot#: P02810NCBI Gene ID: 5554/5555
Uniprot	P02810
GeneID	5554;5555;
Calculated MW	17kd
Concentration	0.9mg/ml
Formulation	Rabbit IgG in pH7.4 PBS, 0.05% NaN ₃ , 40% Glycerol.
Storage	Store at -20°C

Application Details

Western blotting: 1:200-1000

Immunohistochemistry: 1: 20-100

Images



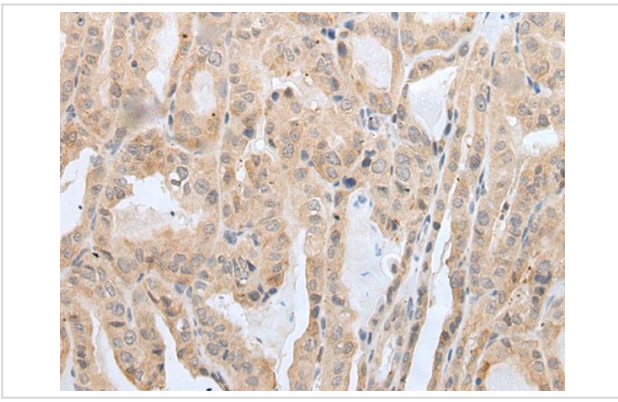
Gel: 12%SDS-PAGE

Lysate: 40 µg, Lane: HEPG2 cell,

Primary antibody:PRH2 antibody at dilution 1/350 dilution,

Secondary antibody: Goat anti rabbit IgG at 1/8000 dilution,

Exposure time: 2 minutes



The image on the left is immunohistochemistry of paraffin-embedded Human thyroid cancer tissue using PRH2 Antibody at dilution 1/30, on the right is treated with synthetic peptide. (Original magnification: x200)

Background

PRH1 (acidic salivary proline-rich protein, HaeIII type, 1) and PRH2 (acidic salivary proline-rich protein, HaeIII type, 2), contain repeated cleavage sites for the restriction enzyme HaeIII and code for PRPs. PRH1/2, also known as salivary acidic proline-rich phosphoprotein 1/2, PRP-1/PRP-2 or parotid proline-rich protein 1/2, is a 166 amino acid secreted protein that functions as a highly potent inhibitor of calcium phosphate crystal growth. Similar to other PRPs, PRH1/2 provides a protective and reparative environment for dental enamel, which is important for teeth integrity.

Note: This product is for in vitro research use only