

HOXC11 Antibody

Catalog No: #43932

Orders: order@signalwayantibody.comSupport: tech@signalwayantibody.com

Description

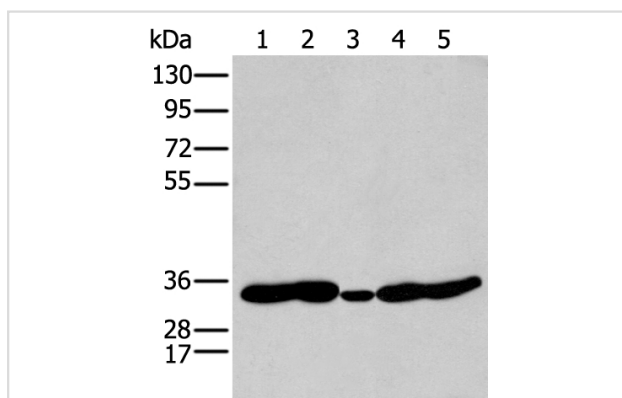
Product Name	HOXC11 Antibody
Host Species	Rabbit
Clonality	Polyclonal
Purification	Antigen affinity purification
Applications	IHC WB
Species Reactivity	Hu Ms
Specificity	The antibody detects endogenous levels of total HOXC11 protein.
Immunogen Type	peptide
Immunogen Description	Synthetic peptide of human HOXC11
Target Name	HOXC11
Other Names	HOX3H
Accession No.	Swiss-Prot#: O43248NCBI Gene ID: 3227
Uniprot	O43248
GeneID	3227;
Calculated MW	34kd
Concentration	0.7mg/ml
Formulation	Rabbit IgG in pH7.4 PBS, 0.05% NaN ₃ , 40% Glycerol.
Storage	Store at -20°C

Application Details

Western blotting: 1:200-1000

Immunohistochemistry: 1: 20-100

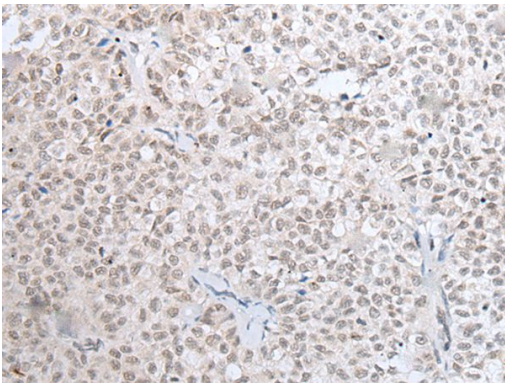
Images



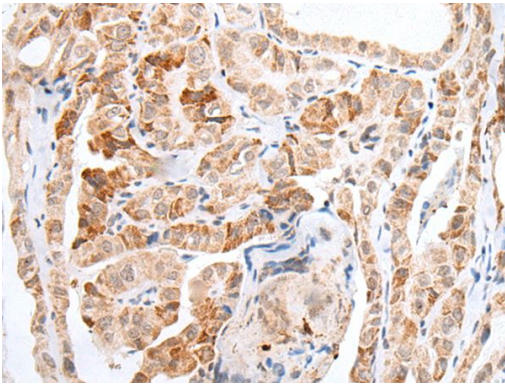
Gel: 8%SDS-PAGE

Lysate: 40 µg, Lane 1-5: 231B£B~Mouse heart tissue£B~Human fetal brain tissue£B~Jurkat and Hepg2 cell,

Primary antibody:HOXC11 antibody at dilution 1/250 dilution,
Secondary antibody: Goat anti rabbit IgG at 1/8000 dilution,
Exposure time: 10 seconds



The image on the left is immunohistochemistry of paraffin-embedded Human ovarian cancer tissue using HOXC11 Antibody at dilution 1/25, on the right is treated with synthetic peptide. (Original magnification: x200)



The image on the left is immunohistochemistry of paraffin-embedded Human thyroid cancer tissue using HOXC11 Antibody at dilution 1/25, on the right is treated with synthetic peptide. (Original magnification: x200)

Background

This gene is one of several homeobox HOXC genes located in a cluster on chromosome 12. The product of this gene binds to a promoter element of the lactase-phlorizin hydrolase. It also may play a role in early intestinal development. An alternatively spliced variant encoding a shorter isoform has been described but its full-length nature has not been determined.

Note: This product is for in vitro research use only