

## SEPW1 Antibody

Catalog No: #43935

Orders: order@signalwayantibody.com

Support: tech@signalwayantibody.com

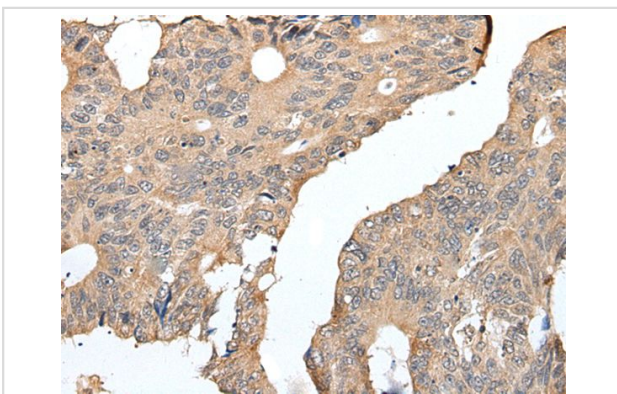
## Description

Product Name	SEPW1 Antibody
Host Species	Rabbit
Clonality	Polyclonal
Purification	Antigen affinity purification
Applications	IHC
Species Reactivity	Hu
Specificity	The antibody detects endogenous levels of total SEPW1 protein.
Immunogen Type	peptide
Immunogen Description	Synthetic peptide of human SEPW1
Target Name	SEPW1
Other Names	seIW
Accession No.	Swiss-Prot#: P63302NCBI Gene ID: 6415
Uniprot	P63302
GeneID	6415;
Concentration	0.8mg/ml
Formulation	Rabbit IgG in pH7.4 PBS, 0.05% NaN <sub>3</sub> , 40% Glycerol.
Storage	Store at -20°C

## Application Details

Immunohistochemistry: 1: 20-100

## Images



The image on the left is immunohistochemistry of paraffin-embedded Human colorectal cancer tissue using SEPW1 Antibody at dilution 1/25, on the right is treated with synthetic peptide. (Original magnification: x200)

## Background

This gene encodes a selenoprotein, which contains a selenocysteine (Sec) residue at its active site. The selenocysteine is encoded by the UGA codon that normally signals translation termination. The 3' UTR of selenoprotein genes have a common stem-loop structure, the sec insertion sequence (SECIS), that is necessary for the recognition of UGA as a Sec codon rather than as a stop signal. This protein shows highest expression in skeletal muscle and heart, and may be involved in oxidation-reduction reactions. A retroprocessed pseudogene, SEPW1P, has been identified and mapped to

chromosome 1p35-34.?

---

Note: This product is for in vitro research use only