

ARL5A Antibody

Catalog No: #43936

Orders: order@signalwayantibody.comSupport: tech@signalwayantibody.com

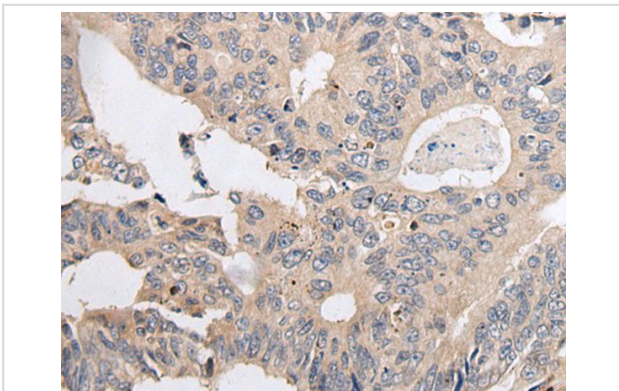
Description

Product Name	ARL5A Antibody
Host Species	Rabbit
Clonality	Polyclonal
Purification	Antigen affinity purification
Applications	IHC
Species Reactivity	Hu Ms Rt
Specificity	The antibody detects endogenous levels of total ARL5A protein.
Immunogen Type	peptide
Immunogen Description	Synthetic peptide of human ARL5A
Target Name	ARL5A
Other Names	ARL5; ARFLP5
Accession No.	Swiss-Prot#: Q9Y689NCBI Gene ID: 26225
Uniprot	Q9Y689
GeneID	26225;
Concentration	0.7mg/ml
Formulation	Rabbit IgG in pH7.4 PBS, 0.05% NaN ₃ , 40% Glycerol.
Storage	Store at -20°C

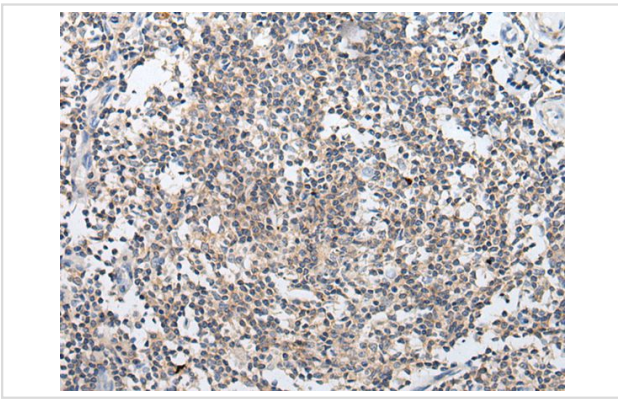
Application Details

Immunohistochemistry: 1: 20-100

Images



The image on the left is immunohistochemistry of paraffin-embedded Human colorectal cancer tissue using ARL5A Antibody at dilution 1/20, on the right is treated with synthetic peptide. (Original magnification: x200)



The image on the left is immunohistochemistry of paraffin-embedded Human tonsil tissue using ARL5A Antibody at dilution 1/20, on the right is treated with synthetic peptide. (Original magnification: x200)

Background

The protein encoded by this gene belongs to the ARF family of GTP-binding proteins. With its distinctive nuclear/nucleolar localization and interaction with HP1alpha, the protein is developmentally regulated and may play a role(s) in nuclear dynamics and/or signaling cascades during embryonic development. Alternative splicing results in multiple transcript variants encoding different isoforms. This gene has multiple pseudogenes.?

Note: This product is for in vitro research use only