

CUBN Antibody

Catalog No: #43937

Orders: order@signalwayantibody.comSupport: tech@signalwayantibody.com

Description

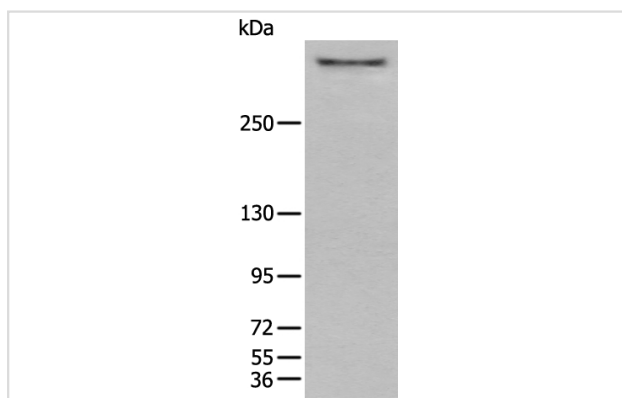
Product Name	CUBN Antibody
Host Species	Rabbit
Clonality	Polyclonal
Purification	Antigen affinity purification
Applications	IHC WB
Species Reactivity	Hu
Specificity	The antibody detects endogenous levels of total CUBN protein.
Immunogen Type	peptide
Immunogen Description	Synthetic peptide of human CUBN
Target Name	CUBN
Other Names	IFCR; MGA1; gp280
Accession No.	Swiss-Prot#: O60494NCBI Gene ID: 8029
Uniprot	O60494
GeneID	8029;
Calculated MW	399kd
Concentration	1.4mg/ml
Formulation	Rabbit IgG in pH7.4 PBS, 0.05% NaN ₃ , 40% Glycerol.
Storage	Store at -20°C

Application Details

Western blotting: 1:200-1000

Immunohistochemistry: 1: 30-150

Images



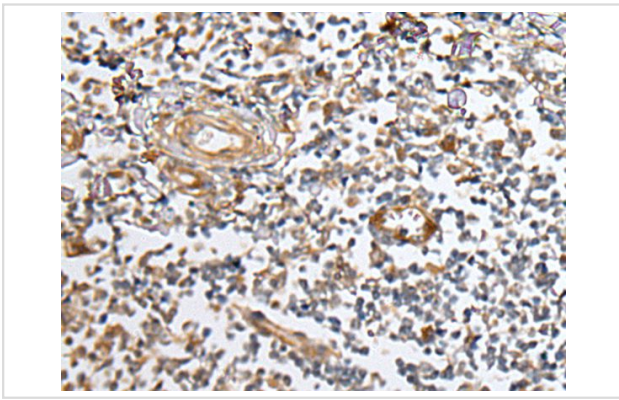
Gel: 6%SDS-PAGE

Lysate: 40 µg, Lane: Human kidney tissue lysate,

Primary antibody:CUBN antibody at dilution 1/500 dilution,

Secondary antibody: Goat anti rabbit IgG at 1/8000 dilution,

Exposure time: 6 minutes



The image on the left is immunohistochemistry of paraffin-embedded Human tonsil tissue using CUBN Antibody at dilution 1/40, on the right is treated with synthetic peptide. (Original magnification: x200)

Background

Cubilin (CUBN) acts as a receptor for intrinsic factor-vitamin B12 complexes. The role of receptor is supported by the presence of 27 CUB domains. Cubulin is located within the epithelium of intestine and kidney. Mutations in CUBN may play a role in autosomal recessive megaloblastic anemia.

Note: This product is for in vitro research use only