

DES Antibody

Catalog No: #43938

Orders: order@signalwayantibody.comSupport: tech@signalwayantibody.com

Description

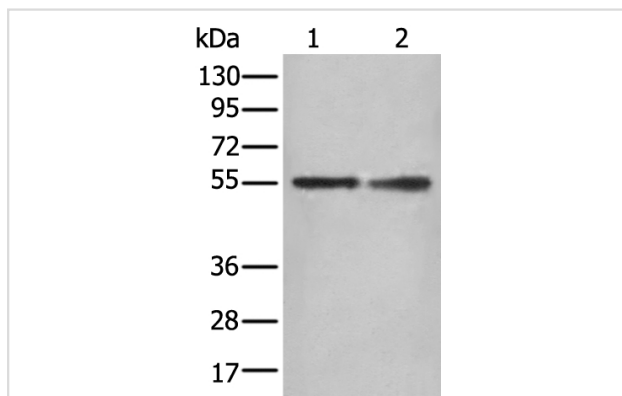
Product Name	DES Antibody
Host Species	Rabbit
Clonality	Polyclonal
Purification	Antigen affinity purification
Applications	IHC WB
Species Reactivity	Hu Ms Rt
Specificity	The antibody detects endogenous levels of total DES protein.
Immunogen Type	peptide
Immunogen Description	Synthetic peptide of human DES
Target Name	DES
Other Names	CSM1; CSM2; LGMD2R
Accession No.	Swiss-Prot#: P17661NCBI Gene ID: 1674
Uniprot	P17661
GeneID	1674;
Calculated MW	54kd
Concentration	0.8mg/ml
Formulation	Rabbit IgG in pH7.4 PBS, 0.05% NaN ₃ , 40% Glycerol.
Storage	Store at -20°C

Application Details

Western blotting: 1:200-1000

Immunohistochemistry: 1: 20-100

Images



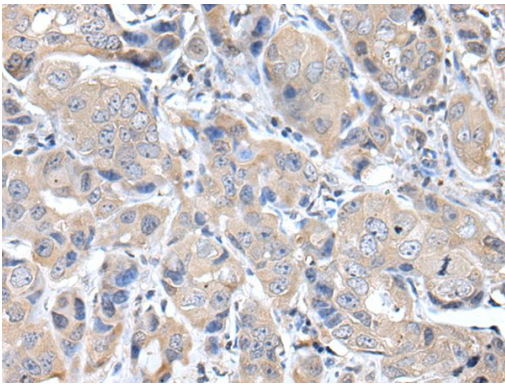
Gel: 8%SDS-PAGE

Lysate: 40 µg, Lane 1-2: Jurkat and Hela cell lysates,

Primary antibody:DES antibody at dilution 1/300 dilution,

Secondary antibody: Goat anti rabbit IgG at 1/8000 dilution,

Exposure time: 10 seconds



The image on the left is immunohistochemistry of paraffin-embedded Human breast cancer tissue using DES Antibody at dilution 1/30, on the right is treated with synthetic peptide. (Original magnification: x200)

Background

This gene encodes a muscle-specific class III intermediate filament. Homopolymers of this protein form a stable intracytoplasmic filamentous network connecting myofibrils to each other and to the plasma membrane. Mutations in this gene are associated with desmin-related myopathy, a familial cardiac and skeletal myopathy (CSM), and with distal myopathies.

Note: This product is for in vitro research use only