

Description

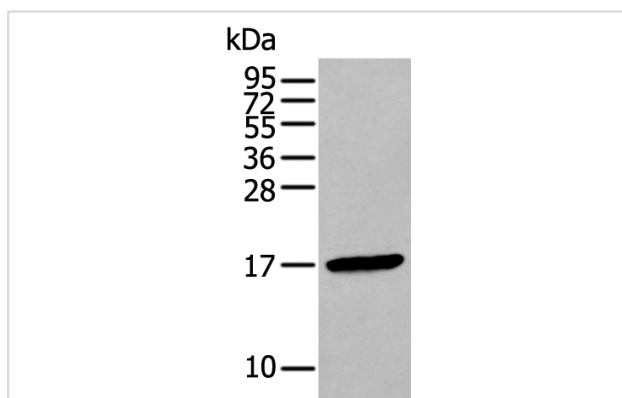
Product Name	FSHB Antibody
Host Species	Rabbit
Clonality	Polyclonal
Purification	Antigen affinity purification
Applications	IHC WB
Species Reactivity	Hu
Specificity	The antibody detects endogenous levels of total FSHB protein.
Immunogen Type	peptide
Immunogen Description	Synthetic peptide of human FSHB
Target Name	FSHB
Other Names	HH24
Accession No.	Swiss-Prot#: P01225NCBI Gene ID: 2488
Uniprot	P01225
GeneID	2488;
Calculated MW	15kd
Concentration	0.4mg/ml
Formulation	Rabbit IgG in pH7.4 PBS, 0.05% NaN ₃ , 40% Glycerol.
Storage	Store at -20°C

Application Details

Western blotting: 1:200-1000

Immunohistochemistry: 1: 20-100

Images



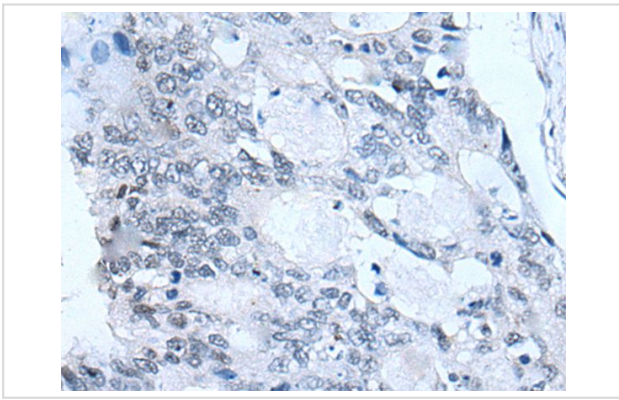
Gel: 12%SDS-PAGE

Lysate: 40 µg, Lane: HL-60 cell lysate,

Primary antibody:FSHB antibody at dilution 1/200 dilution,

Secondary antibody: Goat anti rabbit IgG at 1/8000 dilution,

Exposure time: 20 seconds



The image on the left is immunohistochemistry of paraffin-embedded Human colorectal cancer tissue using FSHB Antibody at dilution 1/30, on the right is treated with synthetic peptide. (Original magnification: x200)

Background

The pituitary glycoprotein hormone family includes follicle-stimulating hormone, luteinizing hormone, chorionic gonadotropin, and thyroid-stimulating hormone. All of these glycoproteins consist of an identical alpha subunit and a hormone-specific beta subunit. This gene encodes the beta subunit of follicle-stimulating hormone. In conjunction with luteinizing hormone, follicle-stimulating hormone induces egg and sperm production. Alternative splicing results in two transcript variants encoding the same protein.

Note: This product is for in vitro research use only