

NRG1 Antibody

Catalog No: #43946

Orders: order@signalwayantibody.com

Support: tech@signalwayantibody.com

Description

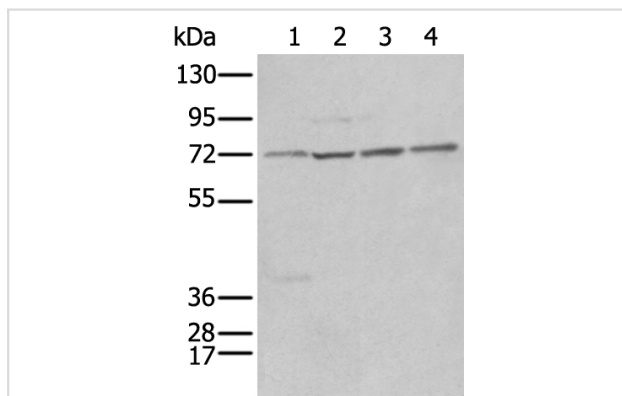
Product Name	NRG1 Antibody
Host Species	Rabbit
Clonality	Polyclonal
Purification	Antigen affinity purification
Applications	IHC WB
Species Reactivity	Hu
Specificity	The antibody detects endogenous levels of total NRG1 protein.
Immunogen Type	peptide
Immunogen Description	Synthetic peptide of human NRG1
Target Name	NRG1
Other Names	GGF; HGL; HRG; NDF; ARIA; GGF2; HRG1; HRGA; SMDF; MST131; MSTP131; NRG1-IT2
Accession No.	Swiss-Prot#: Q02297NCBI Gene ID: 3084
Uniprot	Q02297
GeneID	3084;
Calculated MW	70kd
Concentration	1.3mg/ml
Formulation	Rabbit IgG in pH7.4 PBS, 0.05% NaN ₃ , 40% Glycerol.
Storage	Store at -20°C

Application Details

Western blotting: 1:500-2000

Immunohistochemistry: 1: 100-250

Images



Gel: 6%SDS-PAGE

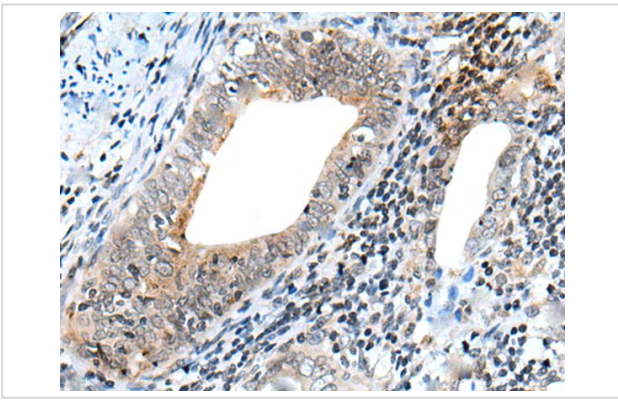
Lysate: 40 µg, Lane 1-4: Human fetal brain

tissueB&B~Jurkat,293T and Hela cell lysates,

Primary antibody:NRG1 antibody at dilution 1/500 dilution,

Secondary antibody: Goat anti rabbit IgG at 1/8000 dilution,

Exposure time: 1 minute



The image on the left is immunohistochemistry of paraffin-embedded Human cervical cancer tissue using NRG1 Antibody at dilution 1/100, on the right is treated with synthetic peptide. (Original magnification: x200)

Background

The protein encoded by this gene is a membrane glycoprotein that mediates cell-cell signaling and plays a critical role in the growth and development of multiple organ systems. An extraordinary variety of different isoforms are produced from this gene through alternative promoter usage and splicing. These isoforms are expressed in a tissue-specific manner and differ significantly in their structure, and are classified as types I, II, III, IV, V and VI. Dysregulation of this gene has been linked to diseases such as cancer, schizophrenia, and bipolar disorder (BPD).

Note: This product is for in vitro research use only