

## Description

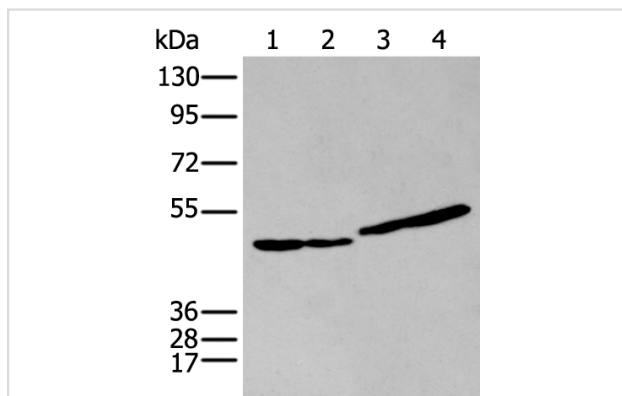
Product Name	IL9R Antibody
Host Species	Rabbit
Clonality	Polyclonal
Purification	Antigen affinity purification
Applications	IHC WB
Species Reactivity	Hu Ms
Specificity	The antibody detects endogenous levels of total IL9R protein.
Immunogen Type	peptide
Immunogen Description	Synthetic peptide of human IL9R
Target Name	IL9R
Other Names	CD129; IL-9R
Accession No.	Swiss-Prot#: Q01113NCBI Gene ID: 3581
Uniprot	Q01113
GeneID	3581;
Calculated MW	57kd
Concentration	0.5mg/ml
Formulation	Rabbit IgG in pH7.4 PBS, 0.05% NaN <sub>3</sub> , 40% Glycerol.
Storage	Store at -20°C

## Application Details

Western blotting: 1:200-1000

Immunohistochemistry: 1: 20-100

## Images



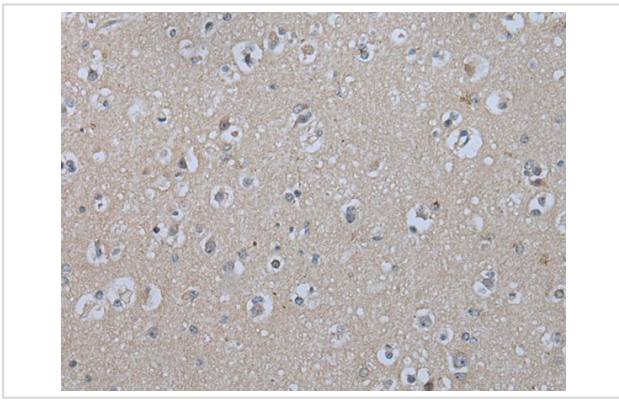
Gel: 8%SDS-PAGE

Lysate: 40 µg, Lane 1-4: JurkatB $\times$ B $\rightarrow$ RAW264.7B $\times$ B $\rightarrow$ HUVEC and A549 cell lysates,

Primary antibody:IL9R antibody at dilution 1/200 dilution,

Secondary antibody: Goat anti rabbit IgG at 1/8000 dilution,

Exposure time: 15 seconds



The image on the left is immunohistochemistry of paraffin-embedded Human brain tissue using IL9R Antibody at dilution 1/25, on the right is treated with synthetic peptide. (Original magnification: x200)

## Background

The protein encoded by this gene is a cytokine receptor that specifically mediates the biological effects of interleukin 9 (IL9). The functional IL9 receptor complex requires this protein as well as the interleukin 2 receptor, gamma (IL2RG), a common gamma subunit shared by the receptors of many different cytokines. The ligand binding of this receptor leads to the activation of various JAK kinases and STAT proteins, which connect to different biologic responses. This gene is located at the pseudoautosomal regions of X and Y chromosomes. Genetic studies suggested an association of this gene with the development of asthma. Multiple pseudogenes on chromosome 9, 10, 16, and 18 have been described. Alternatively spliced transcript variants have been found for this gene.

Note: This product is for in vitro research use only