

## SERPINB7 Antibody

Catalog No: #43950

Orders: order@signalwayantibody.com

Support: tech@signalwayantibody.com

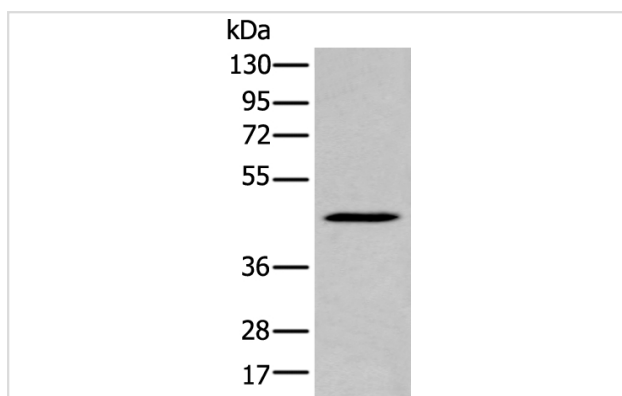
## Description

Product Name	SERPINB7 Antibody
Host Species	Rabbit
Clonality	Polyclonal
Purification	Antigen affinity purification
Applications	WB
Species Reactivity	Hu
Specificity	The antibody detects endogenous levels of total SERPINB7 protein.
Immunogen Type	peptide
Immunogen Description	Synthetic peptide of human SERPINB7
Target Name	SERPINB7
Other Names	PPKN; TP55; MEGSIN
Accession No.	Swiss-Prot#: O75635NCBI Gene ID: 8710
Uniprot	O75635
GeneID	8710;
Calculated MW	43kd
Concentration	1.3mg/ml
Formulation	Rabbit IgG in pH7.4 PBS, 0.05% NaN <sub>3</sub> , 40% Glycerol.
Storage	Store at -20°C

## Application Details

Western blotting: 1:200-1000

## Images



Gel: 8%SDS-PAGE

Lysate: 40 µg, Lane: HL60 cell lysate,

Primary antibody:SERPINB7 antibody at dilution 1/200 dilution,

Secondary antibody: Goat anti rabbit IgG at 1/8000 dilution,

Exposure time: 30 seconds

## Background

This gene encodes a member of a family of proteins which function as protease inhibitors. Expression of this gene is upregulated in IgA nephropathy and mutations have been found to cause palmoplantar keratoderma, Nagashima type. Alternative splicing results in multiple transcript variants.

---

Note: This product is for in vitro research use only