

MLANA Antibody

Catalog No: #43951

Orders: order@signalwayantibody.com

Support: tech@signalwayantibody.com

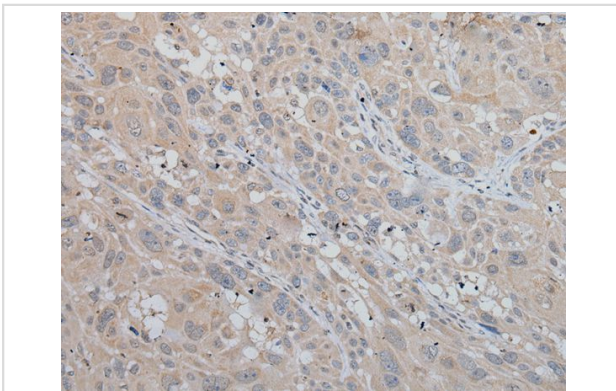
Description

Product Name	MLANA Antibody
Host Species	Rabbit
Clonality	Polyclonal
Purification	Antigen affinity purification
Applications	IHC
Species Reactivity	Hu
Specificity	The antibody detects endogenous levels of total MLANA protein.
Immunogen Type	peptide
Immunogen Description	Synthetic peptide of human MLANA
Target Name	MLANA
Other Names	MART1; MART-1
Accession No.	Swiss-Prot#: Q16655NCBI Gene ID: 2315
Uniprot	Q16655
GeneID	2315;
Concentration	1.1mg/ml
Formulation	Rabbit IgG in pH7.4 PBS, 0.05% NaN ₃ , 40% Glycerol.
Storage	Store at -20°C

Application Details

Immunohistochemistry: 1: 100-250

Images



The image on the left is immunohistochemistry of paraffin-embedded Human esophagus cancer tissue using MLANA Antibody at dilution 1/100, on the right is treated with synthetic peptide. (Original magnification: x200)

Background

Melan-A (also designated MART-1) is a melanocyte differentiation antigen that is specific to melanomas, melanocyte cell lines and retina. Melan-A peptide is recognized by most HLA-A2-restricted tumor-specific tumor-infiltrating lymphocytes in patients with melanoma. Antimelanoma cytotoxic T lymphocytes can be generated with a Melan-A peptide, implicating Melan-A as a potential candidate for antigen-specific immunotherapy in melanoma patients. Involved in melanosome biogenesis by ensuring the stability of GPR143. Plays a vital role in the expression, stability, trafficking, and

processing of melanocyte protein PMEL, which is critical to the formation of stage II melanosomes.

Note: This product is for in vitro research use only