

## MYF6 Antibody

Catalog No: #43952

Orders: [order@signalwayantibody.com](mailto:order@signalwayantibody.com)Support: [tech@signalwayantibody.com](mailto:tech@signalwayantibody.com)

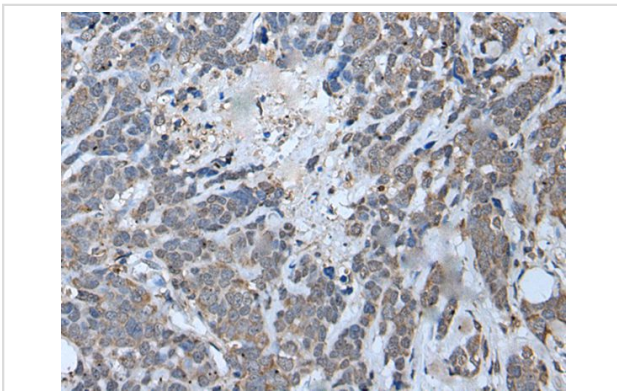
## Description

Product Name	MYF6 Antibody
Host Species	Rabbit
Clonality	Polyclonal
Purification	Antigen affinity purification
Applications	IHC
Species Reactivity	Hu Ms Rt
Specificity	The antibody detects endogenous levels of total MYF6 protein.
Immunogen Type	peptide
Immunogen Description	Synthetic peptide of human MYF6
Target Name	MYF6
Other Names	CNM3; MRF4; myf-6; bHLHc4
Accession No.	Swiss-Prot#: P23409NCBI Gene ID: 4618
Uniprot	P23409
GeneID	4618;
Concentration	1mg/ml
Formulation	Rabbit IgG in pH7.4 PBS, 0.05% NaN <sub>3</sub> , 40% Glycerol.
Storage	Store at -20°C

## Application Details

Immunohistochemistry: 1: 20-100

## Images



The image on the left is immunohistochemistry of paraffin-embedded Human thyroid cancer tissue using MYF6 Antibody at dilution 1/40, on the right is treated with synthetic peptide. (Original magnification: x200)

## Background

The protein encoded by this gene is a probable basic helix-loop-helix (bHLH) DNA binding protein involved in muscle differentiation. The encoded protein likely acts as a heterodimer with another bHLH protein. Defects in this gene are a cause of autosomal dominant centronuclear myopathy (ADCNM).

---

Note: This product is for in vitro research use only