

## CCL18 Antibody

Catalog No: #43953

Orders: [order@signalwayantibody.com](mailto:order@signalwayantibody.com)Support: [tech@signalwayantibody.com](mailto:tech@signalwayantibody.com)

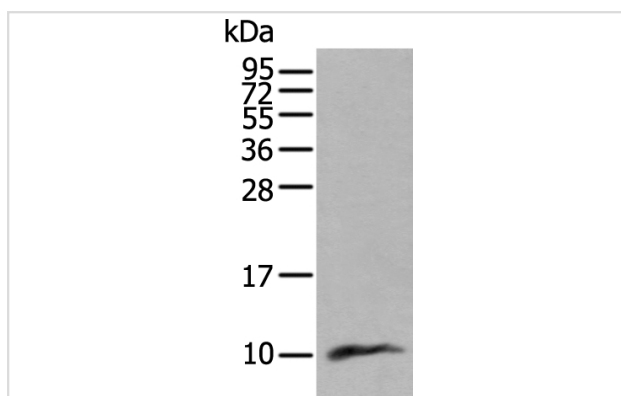
## Description

Product Name	CCL18 Antibody
Host Species	Rabbit
Clonality	Polyclonal
Purification	Antigen affinity purification
Applications	WB
Species Reactivity	Hu
Specificity	The antibody detects endogenous levels of total CCL18 protein.
Immunogen Type	peptide
Immunogen Description	Synthetic peptide of human CCL18
Target Name	CCL18
Other Names	CKb7; PARC; AMAC1; DCCK1; MIP-4; AMAC-1; DC-CK1; SCYA18
Accession No.	Swiss-Prot#: P55774NCBI Gene ID: 6362
Uniprot	P55774
GeneID	6362;
Calculated MW	10kd
Concentration	1.3mg/ml
Formulation	Rabbit IgG in pH7.4 PBS, 0.05% NaN <sub>3</sub> , 40% Glycerol.
Storage	Store at -20°C

## Application Details

Western blotting: 1:200-1000

## Images



Gel: 12%SDS-PAGE

Lysate: 40 µg, Lane: Human lung tissue lysate,

Primary antibody:CCL18 antibody at dilution 1/400 dilution,

Secondary antibody: Goat anti rabbit IgG at 1/8000 dilution,

Exposure time: 2 minutes

## Background

This antimicrobial gene is one of several Cys-Cys (CC) cytokine genes clustered on the q arm of chromosome 17. Cytokines are a family of secreted proteins involved in immunoregulatory and inflammatory processes. The CC cytokines are proteins characterized by two adjacent cysteines. The

cytokine encoded by this gene displays chemotactic activity for naive T cells, CD4+ and CD8+ T cells and nonactivated lymphocytes, but not for monocytes or granulocytes. This chemokine attracts naive T lymphocytes toward dendritic cells and activated macrophages in lymph nodes. It may play a role in both humoral and cell-mediated immunity responses.

---

Note: This product is for in vitro research use only