

TYRP1 Antibody

Catalog No: #43958

Orders: order@signalwayantibody.comSupport: tech@signalwayantibody.com

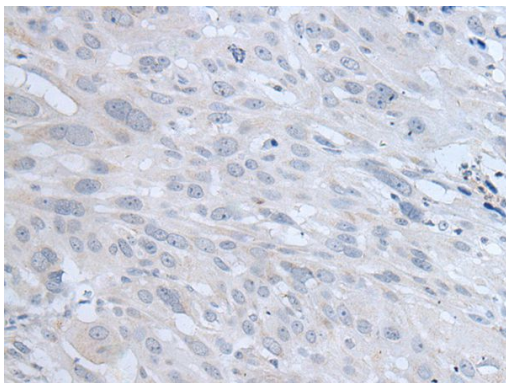
Description

Product Name	TYRP1 Antibody
Host Species	Rabbit
Clonality	Polyclonal
Purification	Antigen affinity purification
Applications	IHC
Species Reactivity	Hu
Specificity	The antibody detects endogenous levels of total TYRP1 protein.
Immunogen Type	peptide
Immunogen Description	Synthetic peptide of human TYRP1
Target Name	TYRP1
Other Names	TRP; CAS2; CATB; GP75; OCA3; TRP1; TYRP; b-PROTEIN
Accession No.	Swiss-Prot#: P17643NCBI Gene ID: 7306
Uniprot	P17643
GeneID	7306;
Concentration	0.7mg/ml
Formulation	Rabbit IgG in pH7.4 PBS, 0.05% NaN ₃ , 40% Glycerol.
Storage	Store at -20°C

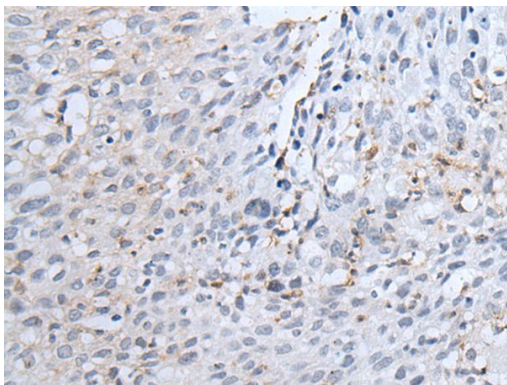
Application Details

Immunohistochemistry: 1: 20-100

Images



The image on the left is immunohistochemistry of paraffin-embedded Human esophagus cancer tissue using TYRP1 Antibody at dilution 1/30, on the right is treated with synthetic peptide. (Original magnification: x200)



The image on the left is immunohistochemistry of paraffin-embedded Human lung cancer tissue using TYRP1 Antibody at dilution 1/30, on the right is treated with synthetic peptide. (Original magnification: x200)

Background

This gene encodes a melanosomal enzyme that belongs to the tyrosinase family and plays an important role in the melanin biosynthetic pathway. Defects in this gene are the cause of rufous oculocutaneous albinism and oculocutaneous albinism type III.

Note: This product is for in vitro research use only