

## HAND1 Antibody

Catalog No: #43962

Orders: [order@signalwayantibody.com](mailto:order@signalwayantibody.com)Support: [tech@signalwayantibody.com](mailto:tech@signalwayantibody.com)

## Description

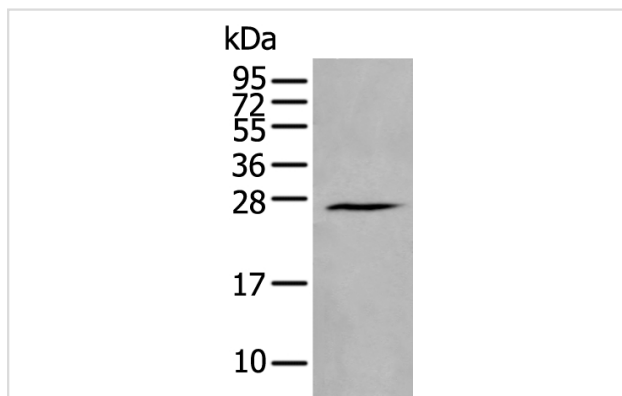
Product Name	HAND1 Antibody
Host Species	Rabbit
Clonality	Polyclonal
Purification	Antigen affinity purification
Applications	IHC WB
Species Reactivity	Hu
Specificity	The antibody detects endogenous levels of total HAND1 protein.
Immunogen Type	peptide
Immunogen Description	Synthetic peptide of human HAND1
Target Name	HAND1
Other Names	Hxt; eHand; Thing1; bHLHa27
Accession No.	Swiss-Prot#: O96004NCBI Gene ID: 9421
Uniprot	O96004
GeneID	9421;
Calculated MW	24kd
Concentration	1mg/ml
Formulation	Rabbit IgG in pH7.4 PBS, 0.05% NaN <sub>3</sub> , 40% Glycerol.
Storage	Store at -20°C

## Application Details

Western blotting: 1:200-1000

Immunohistochemistry: 1: 20-100

## Images



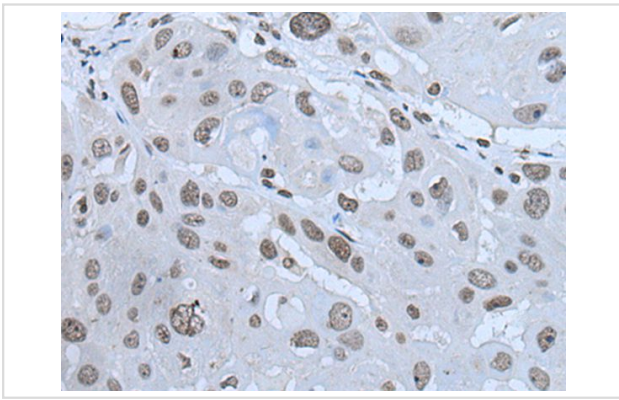
Gel: 12%SDS-PAGE

Lysate: 40 µg, Lane: Human fetal brain tissue lysate,

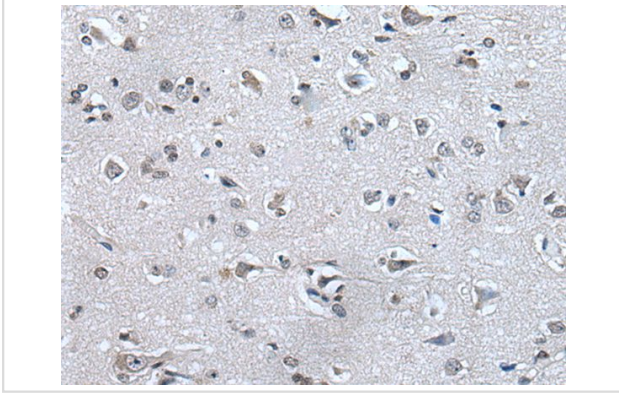
Primary antibody:HAND1 antibody at dilution 1/400 dilution,

Secondary antibody: Goat anti rabbit IgG at 1/8000 dilution,

Exposure time: 1 minute



The image on the left is immunohistochemistry of paraffin-embedded Human esophagus cancer tissue using HAND1 Antibody at dilution 1/30, on the right is treated with synthetic peptide. (Original magnification: x200)



The image on the left is immunohistochemistry of paraffin-embedded Human brain tissue using HAND1 Antibody at dilution 1/30, on the right is treated with synthetic peptide. (Original magnification: x200)

## Background

The protein encoded by this gene belongs to the basic helix-loop-helix family of transcription factors. This gene product is one of two closely related family members, the HAND proteins, which are asymmetrically expressed in the developing ventricular chambers and play an essential role in cardiac morphogenesis. Working in a complementary fashion, they function in the formation of the right ventricle and aortic arch arteries, implicating them as mediators of congenital heart disease. In addition, it has been suggested that this transcription factor may be required for early trophoblast differentiation.

Note: This product is for in vitro research use only