

Cytokeratin 20 antibody

Catalog No: #22920

Orders: order@signalwayantibody.com

Support: tech@signalwayantibody.com

Description

Product Name	Cytokeratin 20 antibody
Host Species	Rabbit
Clonality	Polyclonal
Purification	Purified by antigen-affinity chromatography.
Applications	WB IHC IF
Species Reactivity	Hu
Immunogen Type	Recombinant protein
Immunogen Description	Recombinant protein fragment contain a sequence corresponding to a region within amino acids 75 and 287 of Cytokeratin 20
Target Name	Cytokeratin 20
Accession No.	Swiss-Prot:P35900Gene ID:54474
Uniprot	P35900
GeneID	54474;
Concentration	1mg/ml
Formulation	Supplied in 0.1M Tris-buffered saline with 10% Glycerol (pH7.0). 0.01% Thimerosal was added as a preservative.
Storage	Store at -20°C for long term preservation (recommended). Store at 4°C for short term use.

Application Details

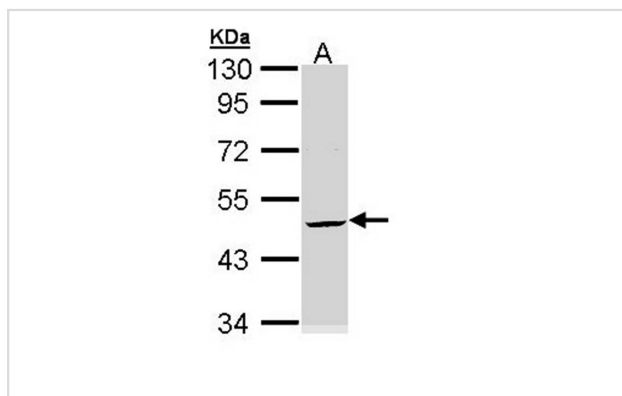
Predicted MW: 49kd

Western blotting: 1:500-1:3000

Immunohistochemistry: 1:100-1:500

Immunofluorescence: 1:100-1:200

Images

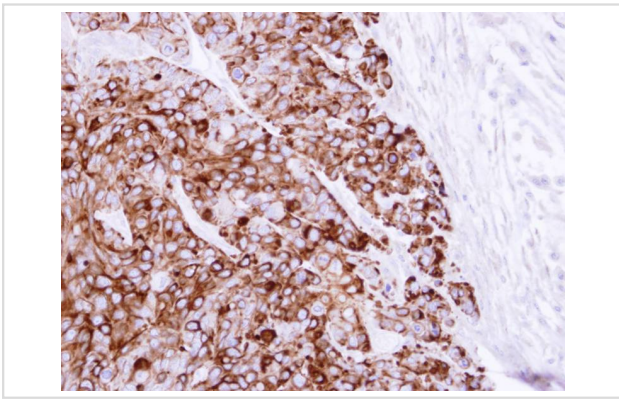


Sample (30 ug of whole cell lysate)

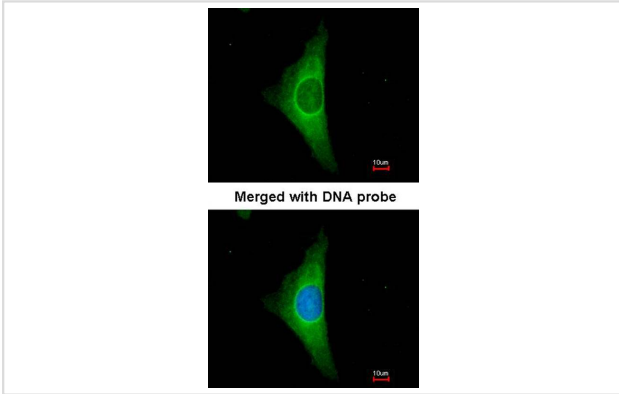
A: HeLa

10% SDS PAGE

Primary antibody diluted at 1: 3000



Immunohistochemical analysis of paraffin-embedded HT29 xenograft, using Cytokeratin 20 antibody at 1: 100 dilution.



Immunofluorescence analysis of paraformaldehyde-fixed HeLa, using Cytokeratin 20 antibody at 1: 200 dilution.

Background

The protein encoded by this gene is a member of the keratin family. The keratins are intermediate filament proteins responsible for the structural integrity of epithelial cells and are subdivided into cytokeratins and hair keratins. The type I cytokeratins consist of acidic proteins which are arranged in pairs of heterotypic keratin chains. This cytokeratin is a major cellular protein of mature enterocytes and goblet cells and is specifically expressed in the gastric and intestinal mucosa. The type I cytokeratin genes are clustered in a region of chromosome 17q12-q21. [provided by RefSeq]

Note: This product is for in vitro research use only