

XYLT1 Antibody

Catalog No: #43975

Orders: order@signalwayantibody.comSupport: tech@signalwayantibody.com

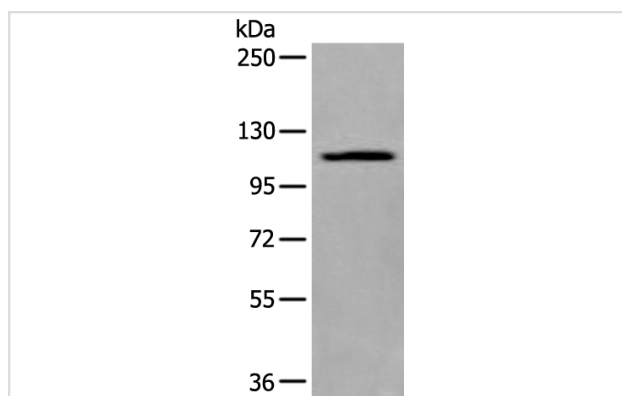
Description

Product Name	XYLT1 Antibody
Host Species	Rabbit
Clonality	Polyclonal
Purification	Antigen affinity purification
Applications	WB
Species Reactivity	Hu Ms Rt
Specificity	The antibody detects endogenous levels of total XYLT1 protein.
Immunogen Type	peptide
Immunogen Description	Synthetic peptide of human XYLT1
Target Name	XYLT1
Other Names	XT1; XTI; XT-I; DBQD2; XYLTi; PXYLT1
Accession No.	Swiss-Prot#: Q86Y38NCBI Gene ID: 64131
Uniprot	Q86Y38
GeneID	64131;
Calculated MW	108kd
Concentration	0.7mg/ml
Formulation	Rabbit IgG in pH7.4 PBS, 0.05% NaN ₃ , 40% Glycerol.
Storage	Store at -20°C

Application Details

Western blotting: 1:200-1000

Images



Gel: 6%SDS-PAGE

Lysate: 40 µg, Lane: A549 cell lysate,

Primary antibody:XYLT1 antibody at dilution 1/300,

Secondary antibody: Goat anti rabbit IgG at 1/8000 dilution,

Exposure time: 1 minute

Background

This locus encodes a xylosyltransferase enzyme. The encoded protein catalyzes transfer of UDP-xylose to serine residues of an acceptor protein substrate. This transfer reaction is necessary for biosynthesis of glycosaminoglycan chains. Mutations in this gene have been associated with

increased severity of pseudoxanthoma elasticum.

Note: This product is for in vitro research use only