

HA-Tag Monoclonal Antibody(1B10)

Catalog No: #44005

Package Size: #44005-1 50ul #44005-2 100ul

Orders: order@signalwayantibody.com

Support: tech@signalwayantibody.com

Description

Product Name	HA-Tag Monoclonal Antibody(1B10)
Host Species	Mouse
Clonality	Monoclonal
Clone No.	1B10
Isotype	IgG1
Applications	WB IP IF
Specificity	The antibody detects C-terminal, internal, and N-terminal HA-tag fusion proteins.
Immunogen Type	Peptide
Immunogen Description	Synthetic Peptide
Target Name	HA-Tag
Concentration	1mg/ml
Formulation	Liquid in PBS containing 50% glycerol, 0.5% BSA and 0.02% sodium azide.
Storage	Store at -20°C/1 year

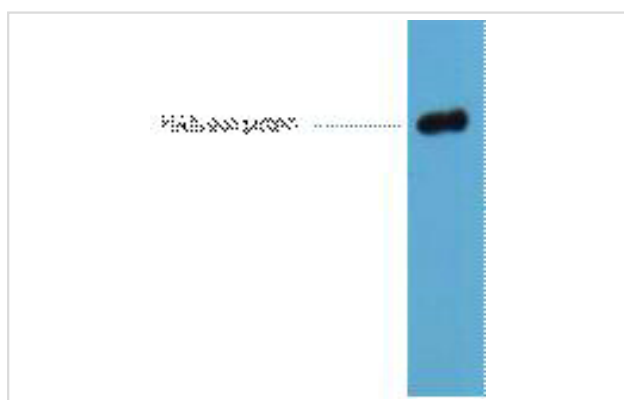
Application Details

Western blotting: 1:500-1:2000

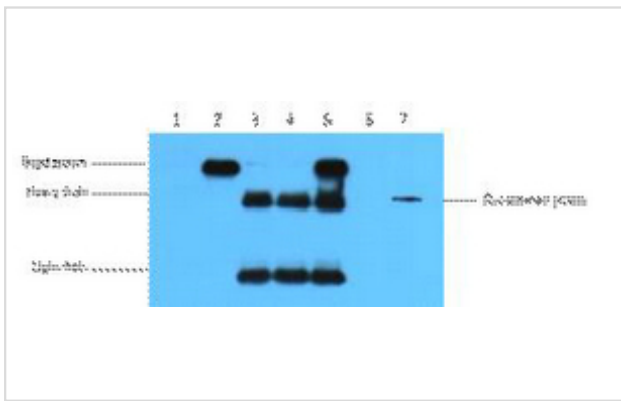
Immunoprecipitation: 1:100

Immunofluorescence: 1:50-1:100

Images

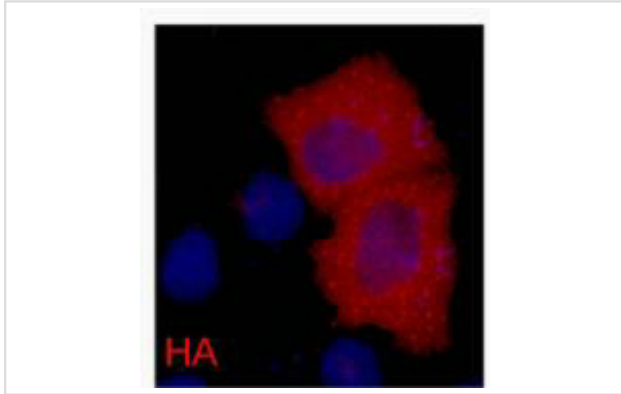


0.5ug HA fusion protein+ Primary antibody dilution at 1:10000



IP antibody use: 5ug HA Mouse IgG1 per ml Lysate, WB 1: 5000

- 1) untransfected 293 cell lysate
- 2) transfected 293 cell lysate with HA-tag fusion protein
- 3) IP (untransfected 293+anti-HA mAb+Protein G agarose)
- 4) IP (transfected 293+ normal Mouse IgG+Prote)



IF analysis of 293 cells transfected with a HA-tag protein, 1:2000 dilution (blue DAPI, red anti-HA)

Note: This product is for in vitro research use only