

## Myc-Tag Monoclonal Antibody(3E8)

Catalog No: #44029

Package Size: #44029-1 50ul #44029-2 100ul

Orders: [order@signalwayantibody.com](mailto:order@signalwayantibody.com)Support: [tech@signalwayantibody.com](mailto:tech@signalwayantibody.com)

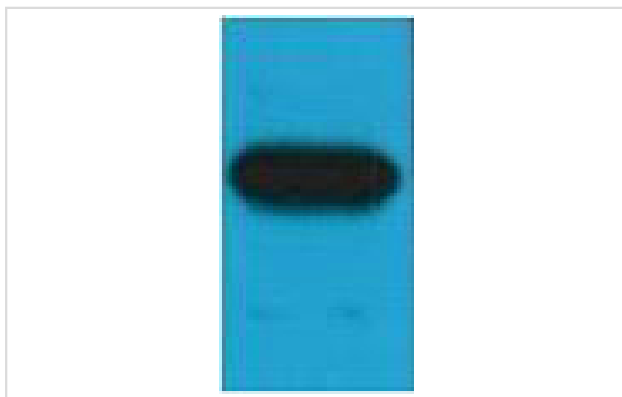
## Description

|                       |   |
|-----------------------|---|
| Product Name          | Myc-Tag Monoclonal Antibody(3E8)  |
| Host Species          | Mouse   |
| Clonality             | Monoclonal  |
| Clone No.             | 3.00E+08  |
| Isotype               | IgG1  |
| Applications          | WB  |
| Specificity           | The antibody can detect C-Myc fusion proteins.                          |
| Immunogen Type        | Peptide   |
| Immunogen Description | Synthetic Peptide   |
| Target Name           | Myc-Tag   |
| Concentration         | 1mg/ml  |
| Formulation           | Liquid in PBS containing 50% glycerol, 0.5% BSA and 0.02% sodium azide. |
| Storage               | Store at -20°C/1 year   |

## Application Details

Western blotting: 1:500-1:2000

## Images



Western blot analysis of c-Myc Recombinant protein, diluted at 1:2000

Note: This product is for in vitro research use only