

# $\beta$ -actin Monoclonal Antibody(5B7)

Catalog No: #44030

Package Size: #44030-1 50ul #44030-2 100ul

Orders: [order@signalwayantibody.com](mailto:order@signalwayantibody.com)Support: [tech@signalwayantibody.com](mailto:tech@signalwayantibody.com)

## Description

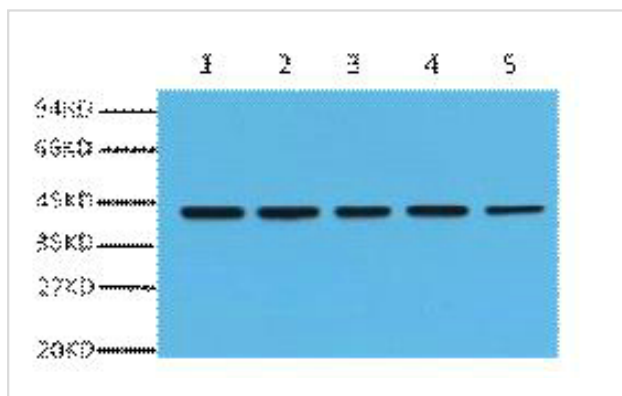
Product Name	$\beta$ -actin Monoclonal Antibody(5B7)
Host Species	Mouse
Clonality	Monoclonal
Clone No.	5B7
Isotype	IgG1
Applications	WB IHC
Species Reactivity	Hu Rt Ms Mk D Chk Hm Rb Insect
Specificity	The antibody detects endogenous $\beta$ -actin protein.
Immunogen Type	Peptide
Immunogen Description	Synthetic Peptide
Target Name	$\beta$ -actin
Other Names	ACTB; Actin, cytoplasmic 1; Beta-actin
Accession No.	Swiss-Prot:P60709Gene ID:60
Uniprot	P60709
GeneID	60;
Calculated MW	43kd
Concentration	1mg/ml
Formulation	Liquid in PBS containing 50% glycerol, 0.5% BSA and 0.02% sodium azide.
Storage	Store at -20°C/1 year

## Application Details

Western blotting: 1:500-1:2000

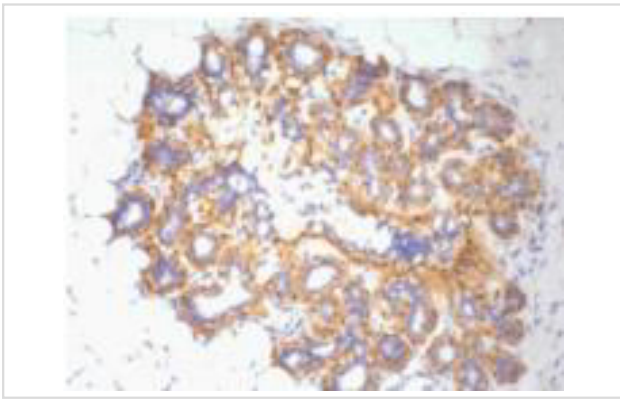
Immunohistochemistry: 1:50-1:200

## Images



Western blot analysis of HeLa (1) Rat brain (2) Mouse brain (3)

Chicken lung (4) and Rabbit testis (5), diluted at 1:10000.



IHC Staining of Human ovary tissue, diluted at 1:200

---

Note: This product is for in vitro research use only