

# $\beta$ -Tubulin Monoclonal Antibody(5G3)

Catalog No: #44032

Package Size: #44032-1 50ul #44032-2 100ul

Orders: [order@signalwayantibody.com](mailto:order@signalwayantibody.com)Support: [tech@signalwayantibody.com](mailto:tech@signalwayantibody.com)

## Description

Product Name	$\beta$ -Tubulin Monoclonal Antibody(5G3)
Host Species	Mouse
Clonality	Monoclonal
Clone No.	5G3
Isotype	IgG1
Applications	WB IHC IF
Species Reactivity	Hu Rt Ms Mk D Chk Hm Rb Shp Insect Yeast
Specificity	The antibody detects endogenous $\beta$ -tubulin protein.
Immunogen Type	Peptide
Immunogen Description	Synthetic Peptide
Target Name	$\beta$ -Tubulin
Other Names	TUBB3; TUBB4; Tubulin beta-3 chain; Tubulin beta-4 chain; Tubulin beta-III
Accession No.	Swiss-Prot:Q13509Gene ID:10381
Uniprot	Q13509
GeneID	10381;
Calculated MW	55kd
Concentration	1mg/ml
Formulation	Liquid in PBS containing 50% glycerol, 0.5% BSA and 0.02% sodium azide.
Storage	Store at -20°C/1 year

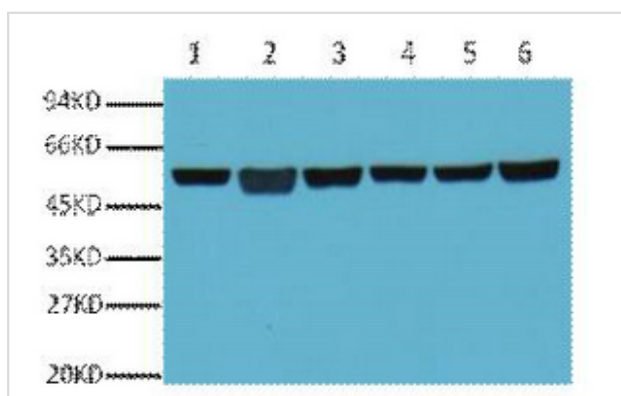
## Application Details

Western blotting: 1:500-1:2000

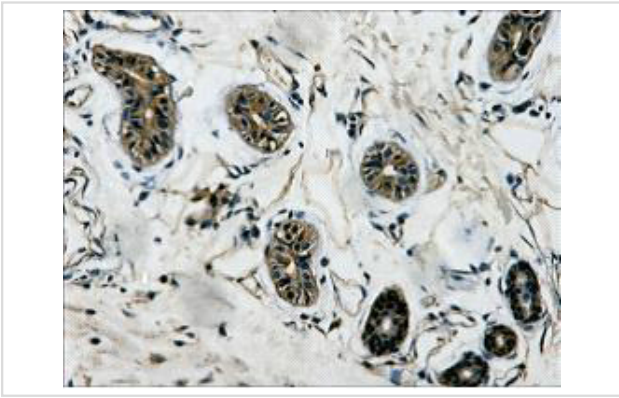
Immunohistochemistry: 1:50-1:200

Immunofluorescence: 1:50-1:100

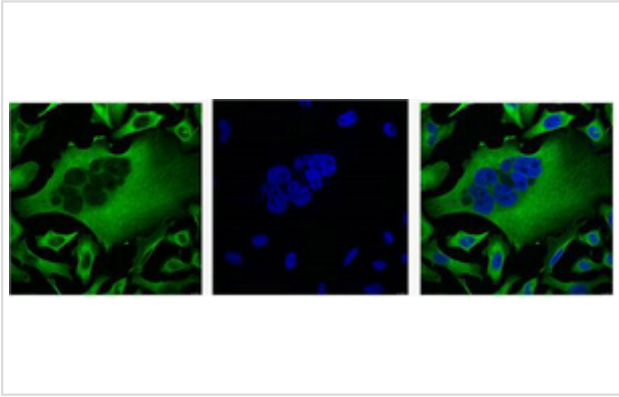
## Images



Western blot analysis of A549 (1), Rat brain (2), Mouse brain (3), Chicken lung (4) and Rabbit testis (5), Sheep muscle (6), diluted at 1:5000.



IHC Staining of Human colon tissue, diluted at 1:200.



IF analysis of Hela with  $\beta$ -Tubulin Monoclonal Antibody(Left) and DAPI (Right) diluted at 1:100.

---

Note: This product is for in vitro research use only