

PACP antibody

Catalog No: #22925

Orders: order@signalwayantibody.com

Support: tech@signalwayantibody.com

Description

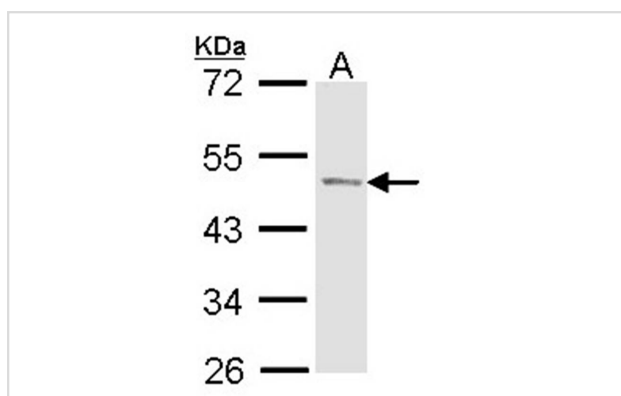
Product Name	PACP antibody
Host Species	Rabbit
Clonality	Polyclonal
Purification	Purified by antigen-affinity chromatography.
Applications	WB
Species Reactivity	Hu
Immunogen Type	Recombinant protein
Immunogen Description	Recombinant protein fragment contain a sequence corresponding to a region within amino acids 177 and 372 of Human ACPP
Target Name	PACP
Accession No.	Swiss-Prot:P15309Gene ID:55
Uniprot	P15309
GeneID	55;
Concentration	0.8mg/ml
Formulation	Supplied in 0.1M Tris-buffered saline with 20% Glycerol (pH7.0). 0.01% Thimerosal was added as a preservative.
Storage	Store at -20°C for long term preservation (recommended). Store at 4°C for short term use.

Application Details

Predicted MW: 48kd

Western blotting: 1:500-1:3000

Images



Sample (30 ug of whole cell lysate)
 A: Molt-4
 10% SDS PAGE
 Primary antibody diluted at 1: 1000

Background

This gene encodes an enzyme that catalyzes the conversion of orthophosphoric monoester to alcohol and orthophosphate. It is synthesized under androgen regulation and is secreted by the epithelial cells of the prostate gland. An alternatively spliced transcript variant encoding a longer isoform

has been found for this gene. This isoform contains a transmembrane domain and is localized in the plasma membrane-endosomal-lysosomal pathway. [provided by RefSeq]

Note: This product is for in vitro research use only